

LUXAFLEX®

Nordic Folding Arm Awnings

ROBUST TELESCOPIC SUPPORT



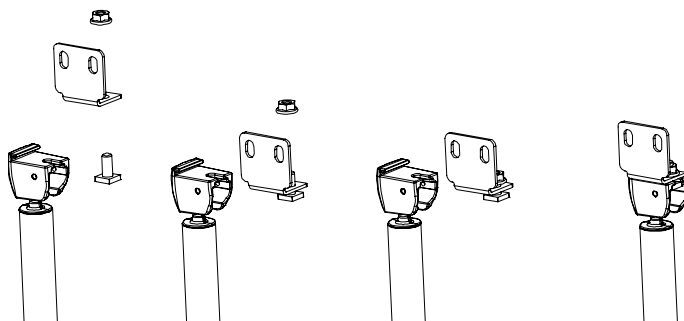
Installation



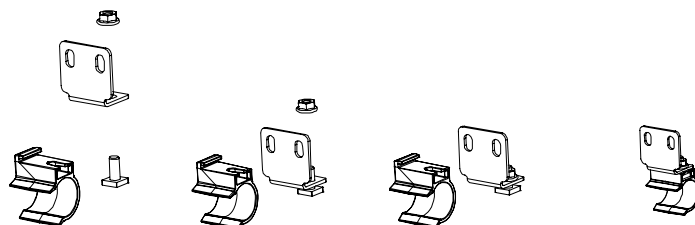


- Do not use telescopic support legs on motorised awnings.
- Do not operate the awning with the telescopic supports precipitated.

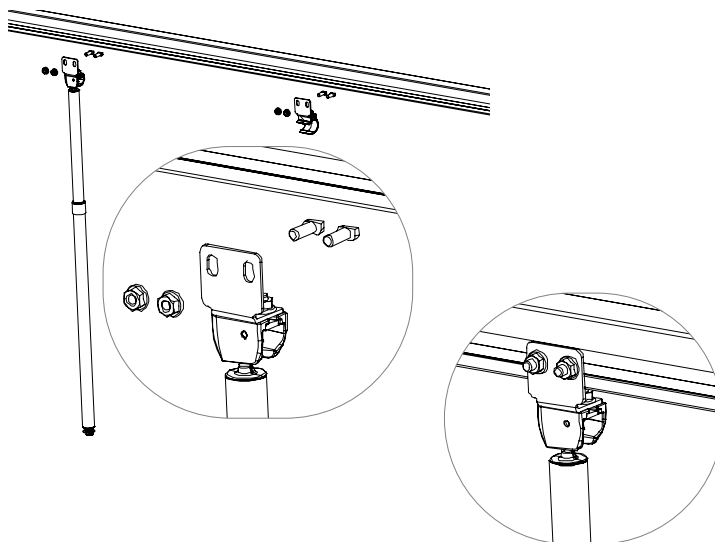
1. Assemble the telescopic support legs on the angle brackets.



2. Assemble the snap-in brackets on the angle brackets.

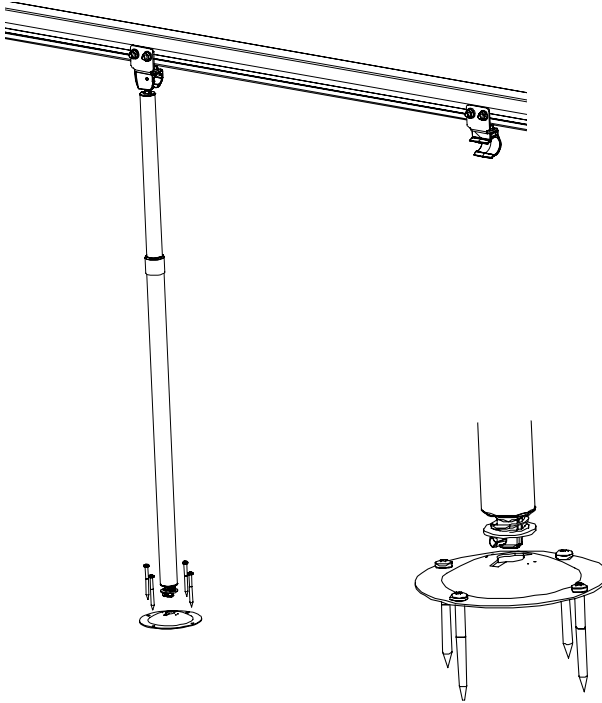


3. Assemble the telescopic support legs and snap-in brackets in the T-slot in the front profile.



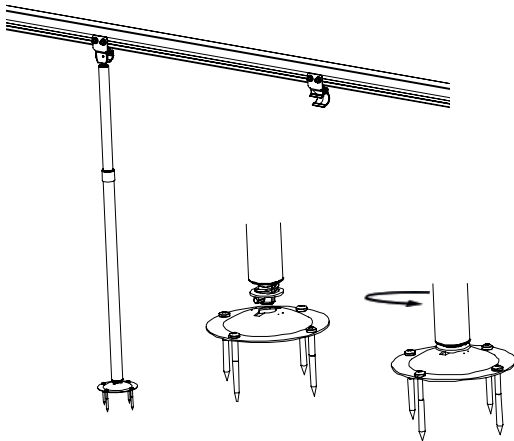
INSTALLATION

4. Roll out the awning to your desired position - let the leg hang down. Screw the foot plates straight under the leg on a rigid surface using 4 appropriate screws per foot plate.



To adjust the length: Hold the lower profile of the leg and turn the upper profile to release the fixing - adjust to the desired length - turn the upper profile to stop.

Push the support leg in the key-shaped hole in the foot plate and turn 90 degrees.



To park the leg in the front profile, turn the leg 90 degrees and lift it from the foot plate - fold the leg and click it in the snap bracket.

