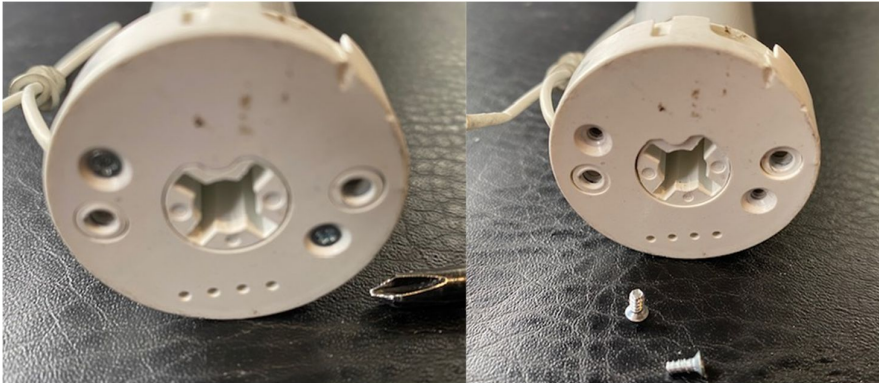


Replacing Sonesse WF30 bent pins.

Issue: pins bent because charger plugged in the wrong way. Repair: replace microchip board.



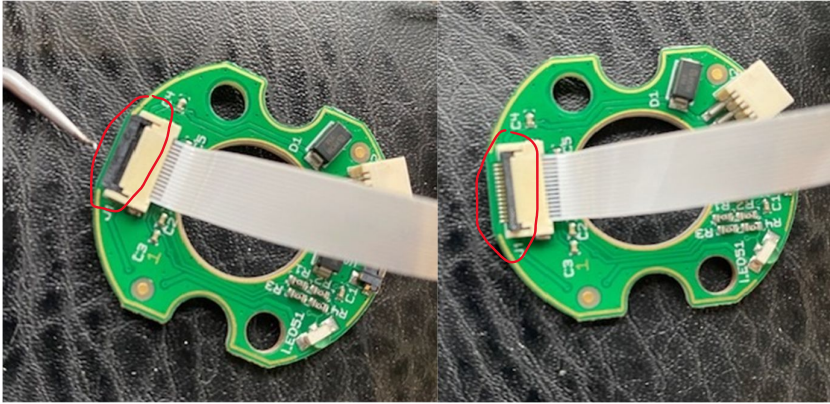
Step 1: Remove 2 x small Phillips head screws as below. NB: If adapter is attached you will need a star head 5 screwdriver bit.



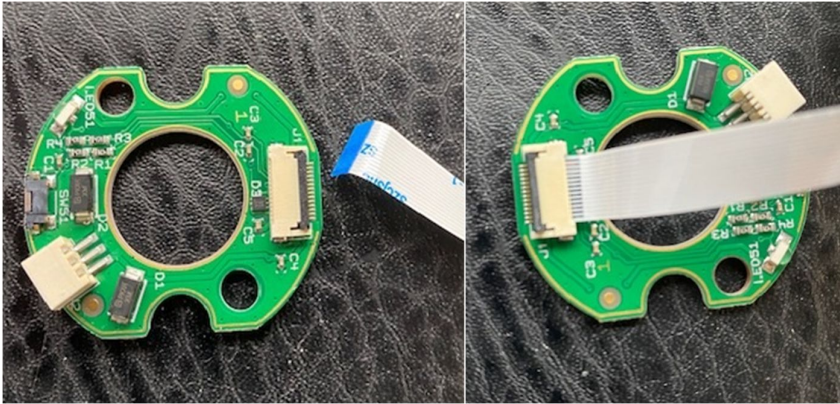
Step 2: Remove cover and pull-out chip board. NB: tape will be attached. Pull on this to extend.



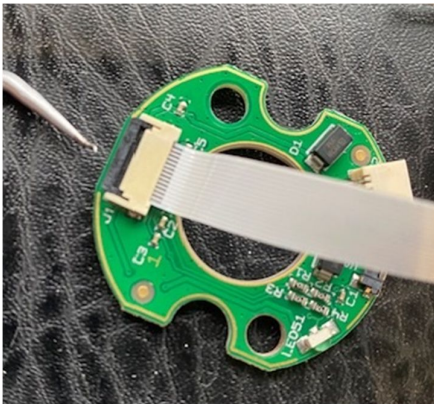
Step 3: Push black tab locking piece in, as shown below. This releases the tape.



Step 4: Once tape is separated simply replace with new microchip board.



Step 5: Plug in the tape to the new board. NB: the black locking tab needs to be pushed in so the tape can insert properly. Once inserted pull the black tab to lock the tape in place.



Step 6: Re assemble. NB: motor will need to be re coded.

The correct way to plug your charger in:

The round sticker is to face the blind or if no sticker the extended lip on the charger cable faces away from the blind. See below.

