

Altus 28 WF Li-ion RTS

Programming the Motor

Note: Ensure the motor has been fully charged and the RTS receiver has been activated prior to installation.

To check the motor charge status, connect to the charger. The Charger LED will illuminate the following:

Solid Red - Charging

Solid Orange - Charging near completion

Solid Green - Charging is complete

1. Wake up the Motor



When using a multi-channel RTS control, remember to select the desired channel prior to programming.

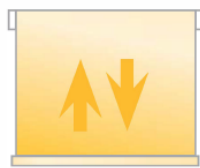
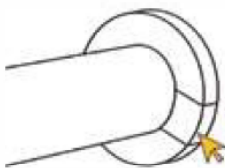


Hold Up and Down together until it jiggles.

If the motor doesn't jiggle move to step 2.

If the motor jiggled, move to step 3.

2. Reset Motor



If the motor doesn't jiggle, hold the program button on the motor until there are 3 jiggles. Then repeat step 1.

3. Check Motor Direction of Rotation

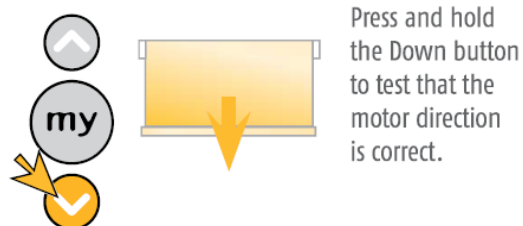
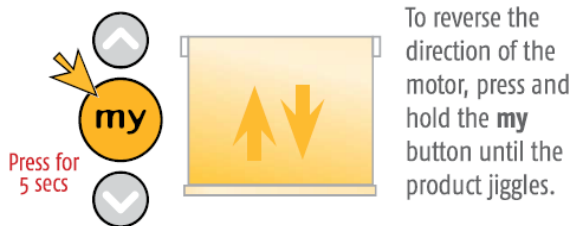


Press and hold the Down button.
Does the product extend?

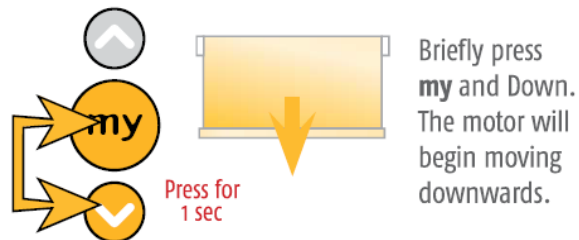
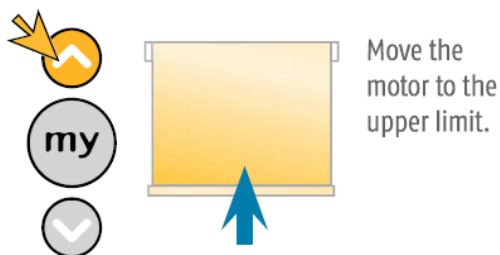
YES - The product extends while pressing the Down button - Go to step 5.

NO - The product retracts while pressing the Down button - Continue to step 4.

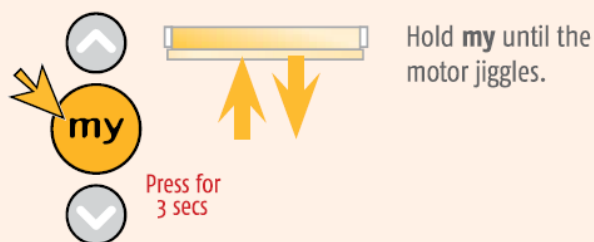
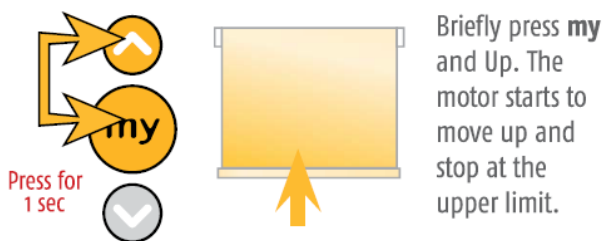
4. Reverse Direction of the Motor



5. Set Top Limit



6. Set Bottom Limit



7. Programming the RTS Control to the Motor

Press the program button on the RTS control for less than 0.5 of a second. The motor will jiggle.

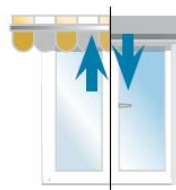


Smoove RTS

OR



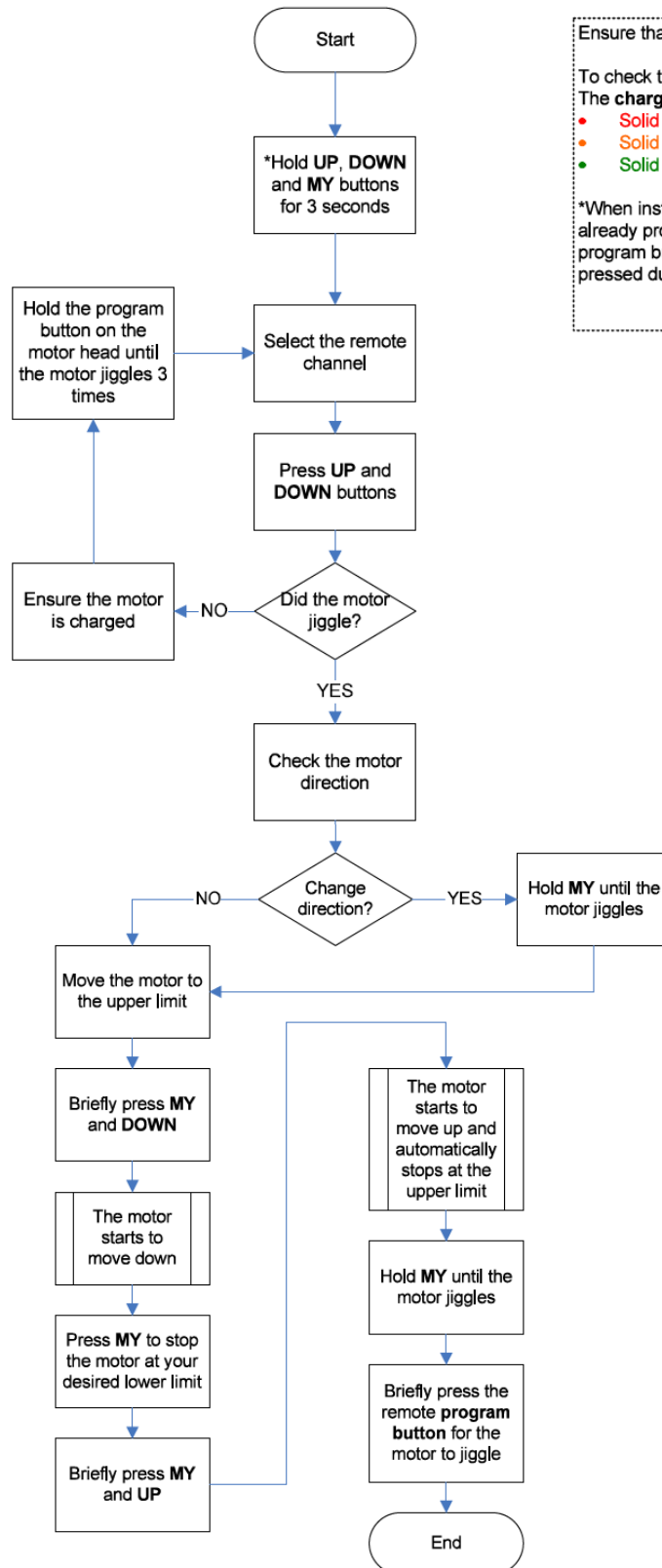
Situo RTS



jiggle = control recorded ✓

8. Programming Complete

Flowchart for Modifying the Motor Rotation Direction



Ensure that the motor is fully charged prior to installation

To check the motor charge status, connect the charger. The **charger LED** will illuminate the following:

- **Solid Red** – Charging
- **Solid Orange** – Charging near completion
- **Solid Green** – Charging is complete

*When installing multiple motors, ensures that motors not already programmed are deactivated. For example, the program button on the motor head is accidentally pressed during the installation of blinds.