

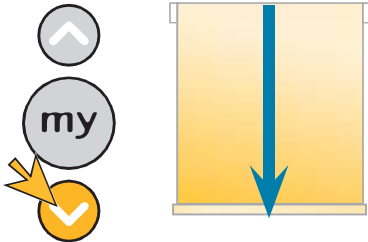
Roll Up 28 RTS & WireFree Roll Up RTS

Adjusting RTS motor limit positions

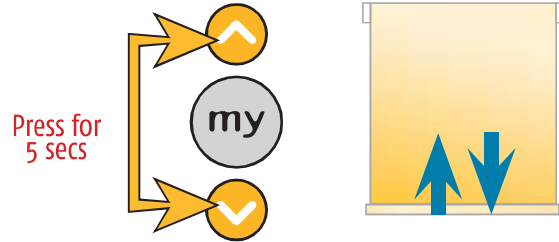


1 Adjusting the Lower limit position

Press the Down button and send the product to the lower limit position.



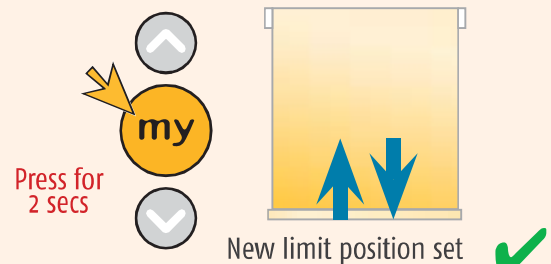
Press and hold the Up and Down buttons until the product jiggles.



Adjust to the correct position using either the Up or Down button.

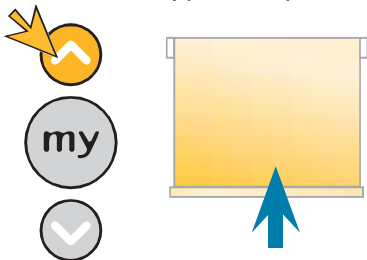


Press and hold the **my** button until the product jiggles.

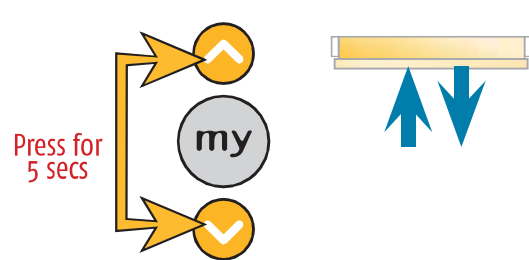


2 Adjusting the Upper limit position

Press the Up button and send the product to the upper limit position.



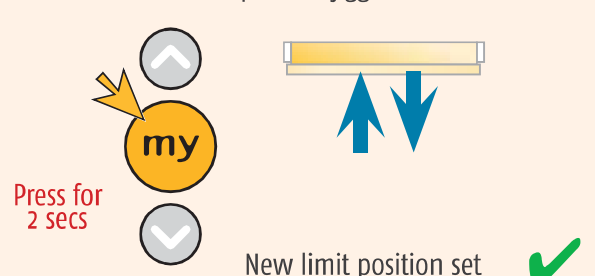
Press and hold the Up and Down buttons until the product jiggles.



Adjust to the correct position using either the Up or Down button.

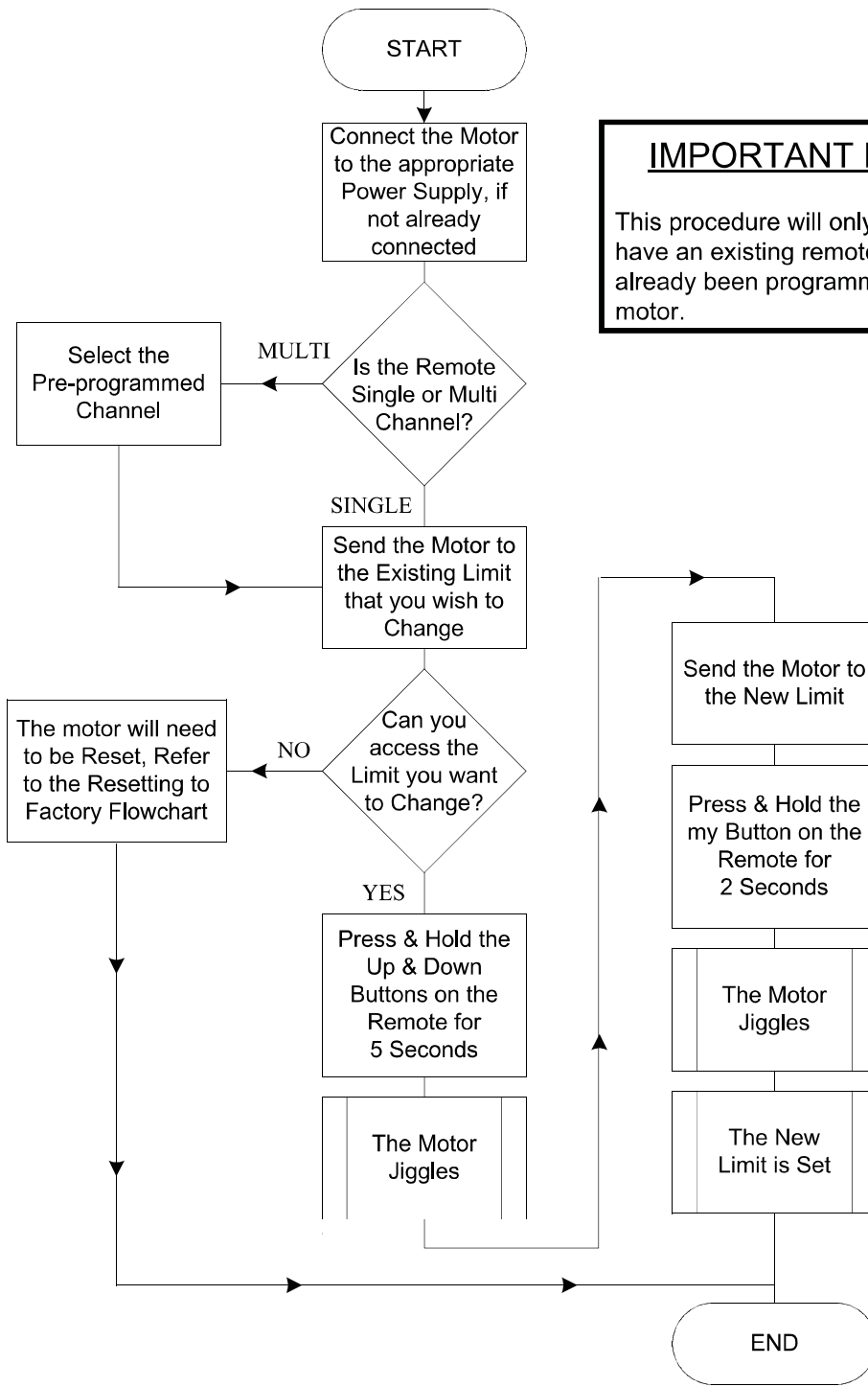


Press and hold the **my** button until the product jiggles.



Roll Up 28 RTS & WireFree Roll Up RTS

Adjusting RTS motor limit positions



IMPORTANT NOTE:
This procedure will only work if you have an existing remote that has already been programmed to the motor.