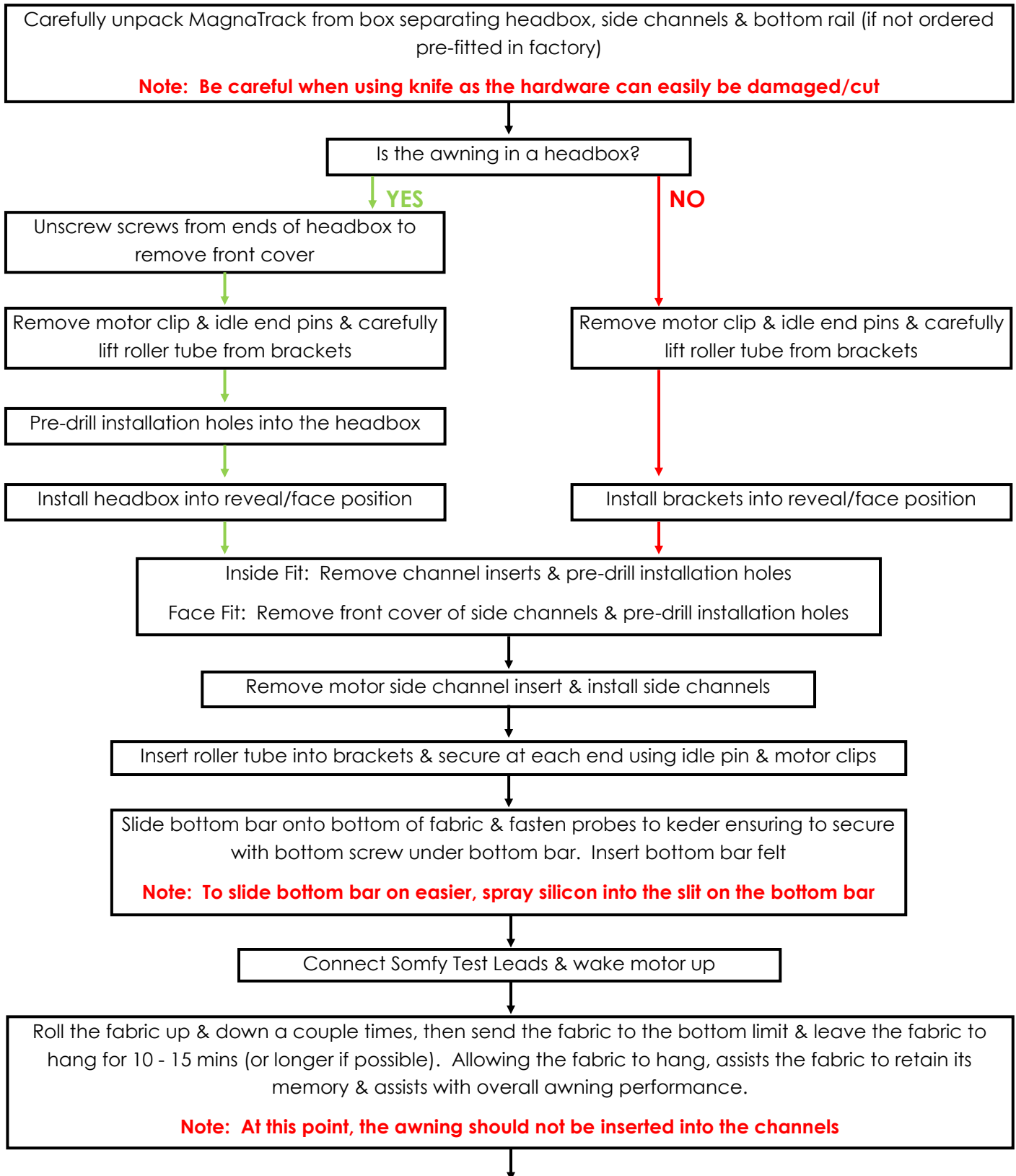


MagnaTrack

Installation Best Practice

We recommend following the below flowchart for successful installation of MagnaTrack awnings



After allowing the fabric to hang, feed the fabric into the side channel insert on the **motor side** & insert this into the side channel

Insert screen guide for the **idle end** into the channel

Using the Somfy Test Leads, roll the fabric up as far as possible

NOTE: A factory reset may be required for programming time out

Remove the idle end pin & lift the idle end out of the bracket. Pull the roll forward enough to allow enough room to lift the bottom bar behind the roll & above the channel to insert the fabric into the screen guide

Place idle end back into brackets & secure with idle pin

Note: Never release pressure from awning until idle pin is secured in place

Set top & bottom limits using remote control

Lower awning fully & let the awning hang again for approx. 10 - 15 mins to further assist with fabric memory

Once awning has had time to hang, roll awning fully up & down twice to further assist with fabric memory

Make necessary adjustments to donuts as required. You will need to fully expose the tube in order to make changes to the donuts:

Note: Motor may turn off & become unresponsive due to automatic cut-off which occurs when the motor is operated too often over a short period making the motor hot. If this happens, leave the motor for 15 - 30mins to allow it to cool down & continue rectifications

Uneven Bottom Rail when raised: E.g. If bottom rail is higher on the left when raised, move the left donut slightly (2 - 4mm) to the right (centre) of the awning

Smiling Bottom Rail when raised: Move both donuts towards the centre, again in small increments

Fabric Puckering: Adjusting donuts too far to the centre may result in some puckering of fabric. Move donuts slightly outwards to find the best overall finish. Move 1 donut at a time as it may not be necessary to move both. Alternatively, remove brush from the back of the headbox

Note: When the donut/s is adjusted, it influences all 3 points above at the same time so there needs to be some compromise. E.g. Moving donuts outwards to reduce the puckering increases the bottom rail smile. Always mark donut edge before moving donut to ensure it can return to original location if required

Once awning has been rectified & customer is satisfied with end result, place headbox cover back onto headbox & secure with screws provided:

Inside/Reveal Fit: Secure from the bottom of the headbox cover

Face Fit: Secure through the side of the headbox where screws were originally removed

Double check all limits are correct & adjust if required

Note: All rectifications need to be completed BEFORE leaving install; do not leave for another day as fabric memory will set in. It is near impossible to rectify with new skins being required

Installation complete