

PowerView Li-ion Battery Pack Product Manual



Luxaflex[®]
WINDOW FASHIONS

POWerview LI-ION BATTERY PACK

OVERVIEW

The PowerView Li-ion Battery Pack can be ordered as a retrofit to any existing PowerView products or can be ordered with any battery powered PowerView blind.

COMPATIBLE PRODUCTS

PowerView Li-ion Battery pack is compatible with the following products:

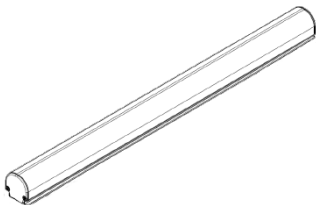
- Duette Shades*
- Silhouette Shades

*Available with all 20mm PowerView Duette Shades with the exception of Duette Skylifts

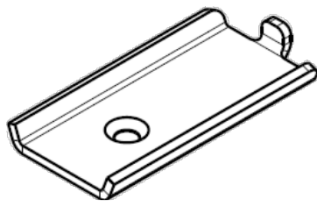
PACKAGE CONTENTS

Each PowerView Li-ion Battery Pack will come with:

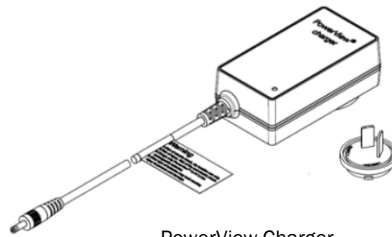
- 1 x Battery Pack
- 2 x Wall Mounting Brackets
- 1 x PowerView Battery Charger



PowerView Li-ion Battery Pack



Wall Mounting Brackets



PowerView Charger

WALL MOUNTING

The brackets supplied with each battery pack are designed to be installed on a wall and as such, are not designed to be installed on the back of the headrail.

To install the brackets, follow the following steps:

- Pick your mounting point
- Mount one bracket
- Use the pack and a level to determine the 2nd bracket's position
- Mount the 2nd bracket and the battery pack (always ensure the connection cable from the shade to the battery pack is easily accessible to the customer)
- You are now ready to connect power to your motor/blind and set up your PowerView® network

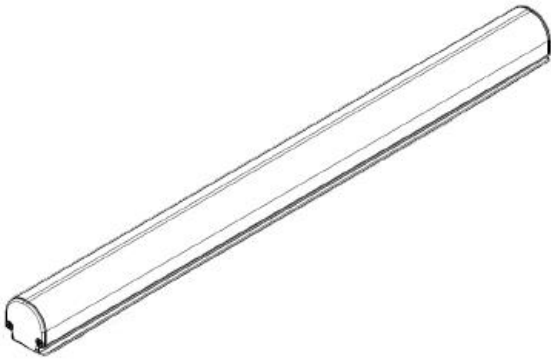
CHARGING

We recommend that you only use the charger supplied with the battery pack to recharge the battery pack.

Typical charging time from empty to fully charged is 3-4 hrs.

DATASHEET INFORMATION

POWERVIEW RECHARGEABLE LI-ION BATTERY PACK



FEATURES & BENEFITS

PowerView Motorisation

- The Powerview motorisation and control system enables your window coverings to be wirelessly operated
- The battery pack gives you the option to charge in-place or at a position of your choice
- The Li-ion battery chemistry gives a prolonged operating life of between 9 – 12 months meaning recharge is only required once a year

Mounting Option

- The battery pack is designed to be externally mounted using the wall brackets

Easier on the Environment

- No longer required to fully replace batteries
- Full recharge completed within 3-4 hours
- Much eco-friendlier than changing Alkaline batteries

Intelligent battery status warning and charging

- Shade movement at slow speed to signal low battery status
- LED flashing on the shade push button, signalling low battery charge
- Red battery warning seen in PowerView App

TECHNICAL DATA

Nominal Voltage	14.4
Nominal Capacity	2400
Power	34.6
Max. Charge Voltage	16.8, CC/CV
Max. Charge Current	2400
Discharge Voltage Cut Off	11.6
Max. Discharge Current	3.0
Self-Discharge	<2%
State Of Charge	<30%
Charge Cycles (>70% Capacity)	+500

Permitted Temperature Ranges	
Discharge Operation	-20°C +60°C
Charge Operation	0°C +45°C

Dimensions & Weight	
Length	266mm
Diameter	22.9mm
Weight	350gm

External Pack	
Length	309mm
Width	24mm
Height	25mm
Weight	300gm
Protection Rate	IP 20

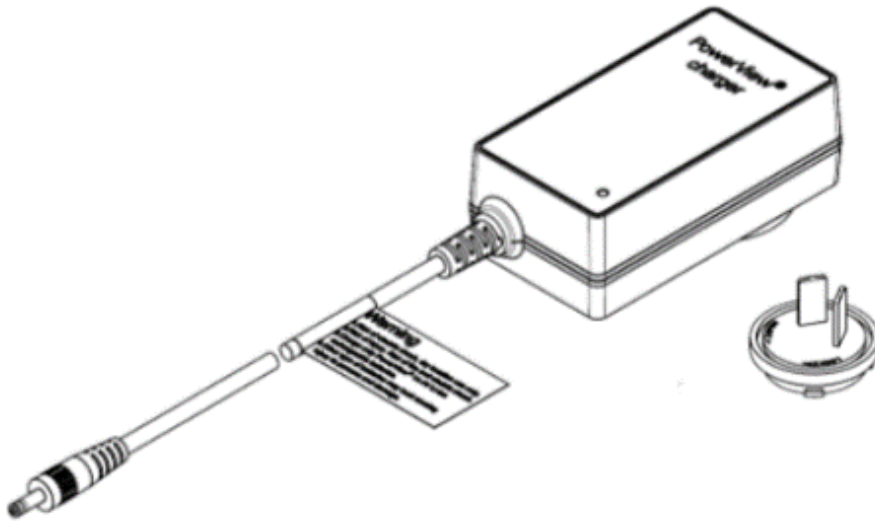
Connections	
2 Core AWG 24 UL Cable with 2 Pole Socked Contact SYP-02TV	

External Pack	
IN: 1 x DC Plug 1.3 x 3.5mm (Charger)	
OUT: 1 x DC Plug 2.1 x 5.5mm (Motor)	

Integrated BMS Protection	
Deep Discharge Protection	
Short Circuit Protection	
Over-Charge Protection	
Temperature Control	

Installation Measurements with Brackets	
Length	310mm
Width	30mm
Height	30mm

POWERVIEW CHARGER



FEATURES & BENEFITS

- 100V/240V Ac Input Voltage for Worldwide Use
- Interchangeable AC Plugs
- 5m Charging Cable for in place charging
- Fast charging - 100% charging time in 3 - 4 hours
- Load Transient Response (Step Load - 40 to 80% of full load)
- LED Charging Status Indication:
 - Green on Standby
 - Red on Charging
- Safety Protection:
 - Over Current/Voltage Protection
 - Short Circuit Protection
- Appearance:
 - Black with Red/Green LED 5m Charging Cable

TECHNICAL DATA

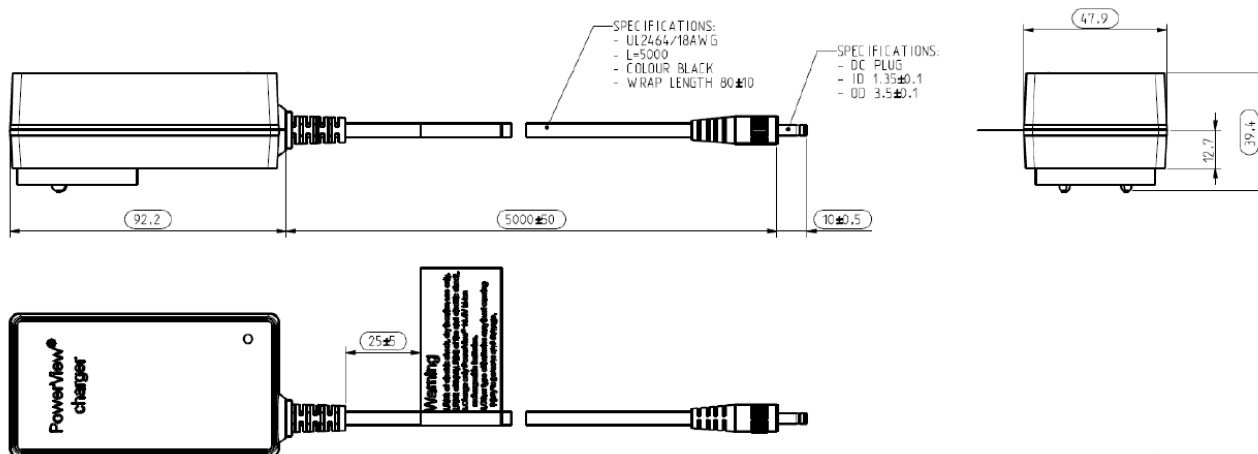
Input	
Voltage	100 - 240V
Frequency	50 - 60Hz
Current	1.0A
Inrush Current (Cold Start 25°C)	115V/40A (max) & 230V/80A (max)
Power Efficiency	83% at full load, 110VAC or 230VAC 50Hz

Output	
Nominal Voltage (DC)	16.8V
Regulation	+2%
Max Load	2000mA
Regulation	+10%

Ambient Conditions	
Operation Temperature	0°C to +40°C
Operation Relative Humidity	20% to 85%
Storage Temperature	-40°C to +70°C
Storage Relative Humidity	10% to 95%

Certification	
Safety	UL1310, EN61558, EN60335
EMI	FCC Part 14 Class B, EN55014-1/2, EN61000-3
Drop Test	1.0m High Drop Twice for each Side
Vibration test	5-60Hz with 10 Octave/min @ 2.1G
MTBF	40,000 Hours

DIMENSIONS



QUESTIONS & ANSWERS

Q: What is the PV Li-ion Battery Pack?

A: The PowerView Li-ion Battery Pack is a low voltage rechargeable power source for PowerView battery motors.

Q: Which products can I use the PV li-ion battery Pack with?

A: Only 18V Powerview Battery Motors are compatible with the Li-ion Battery Pack. The products that can be connected to this source of power are: Duette and Silhouette.

Q: Can I retrofit the PV Li-ion Battery Pack to any shade that uses Battery wand or DC power Supply?

A: Yes. PV Li-ion Battery pack can be used on any installation for products that are currently using a battery wand (12 x AA Alkaline batteries) or the DC Power Supply. It's as simple as disconnecting the old battery wand and plugging in the new PV Li-ion battery pack.

Q: Can I use the battery wand mounting clip to install the PV Li-ion Battery Pack?

A: No. The New PV Li-ion Battery Pack is designed to be installed remotely/separate to the blind using the magnetic wall brackets provided.

Length of the motor cable should be considered when installing the PV Li-ion Battery Pack especially when retrofitting to an existing installation.

Q: Do I need to run wires?

A: No wiring is necessary for PV Li-ion Battery Pack, since it is low voltage – the rated voltage is 14V DC Current.

If the PV Li-ion battery pack is not being installed close to the blind/motor head, then an extension cable will need to be used to connect the battery pack to the motor head.

Q: How long can I expect battery life of the PV Li-ion Battery Pack to last before recharging?

A: Up to 12 months battery life with normal daily use (1 cycle up and down).

Q: How do I recharge the PV Li-ion Battery Pack?

A: A charger for PV Li-ion Battery Pack is required to recharge the Battery Pack and must be ordered as a separate line as it is not included with the PV Li-ion battery pack.

The process only takes 3 – 4 hours for fully recharge. The charger will indicate a Red LED light when the battery pack is charging and a green LED light when it's ready and fully charged.

It's recommended to have 1 charger per every 4 blinds or 1 charger per room/area if it is a large area.

Q: What is the warranty for the PV Li-ion Battery Pack?

A: 3 Years

Q: What colours are available for the PV Li-ion Battery Pack?

A For all the Soft shades range, white is only available. The wall mounting brackets which are included will be the same colour as Battery Pack.

Q: Where should I install my new Li-ion Battery Pack

A: The Li-ion Battery Pack is designed to be installed separately to the blind. It's recommended to install the battery pack on the side of the blind or on top of the blind where possible. For the best performance it is recommended that the Battery Pack is installed in a location with high level of ventilation, and not in direct exposure to the sunlight.

Q: Is it possible to install the PV Li-ion Battery Pack in the reveal?

A: Installing the Battery Pack in reveal can be problematic as the efficiency of the Li-ion Battery Pack is highly reduced when the battery is exposed to an extreme heat. It's very important during the selling and specification process to assess all the variables involved when it comes to the location for installation. Since many installations may have a preference for a reveal fit to try to hide the Li-ion Battery pack behind the blind, it is critical to keep in mind factors such as; what direction the window is facing, what the maximum temperature could be at the window, the type of fabric that is used in the blind, etc. For example, consider a reveal installation using a Duette Architella Fabric, with a north facing window in a high temperature environment. In this case the Li-ion Battery Pack is not recommended.

Q: Does the PV Li-ion Battery Pack have thermal protection cut off?

A: Yes. It's likely to get activated when the temperature surrounding the Li-ion Battery Pack reaches over 60 degrees Celsius. Once the thermal protection is activated, the battery will become inoperable for a short amount of time.

Q: How many cells does the Li-ion Battery Pack contain?

A: 3 cells are contained within the PowerView Lithium Battery Pack.

Q: Can the PV Li-ion Battery Pack be used with other battery powered products?

A: No. The PowerView Li-ion Battery Pack has only been tested for the product range as stated.

Q: What's the initial charge of the PowerView Li-ion Battery Pack?

A: Due to transport regulations the PowerView Li-ion Battery Pack can only be sent out with a 30% charge. This amount of charge has been tested to be more than enough to program the blind and show how it works to the consumer. It's highly recommended to completely charge the PowerView Li-ion Battery Pack for best results before recurrent use.

Q: Should I charge the PowerView Li-ion Battery Pack when it's being used to Power up the motor?

A: No. It's not recommended to charge the PowerView Li-ion Battery Pack while it's being used with the shade.

Q: What are the storage conditions for the PowerView Li-ion Battery Pack?

A: The storage location should be dry and away from any chemical substances. The PowerView Li-ion Battery Pack should be recharged at least once a year if it is being held for an extended period of time.