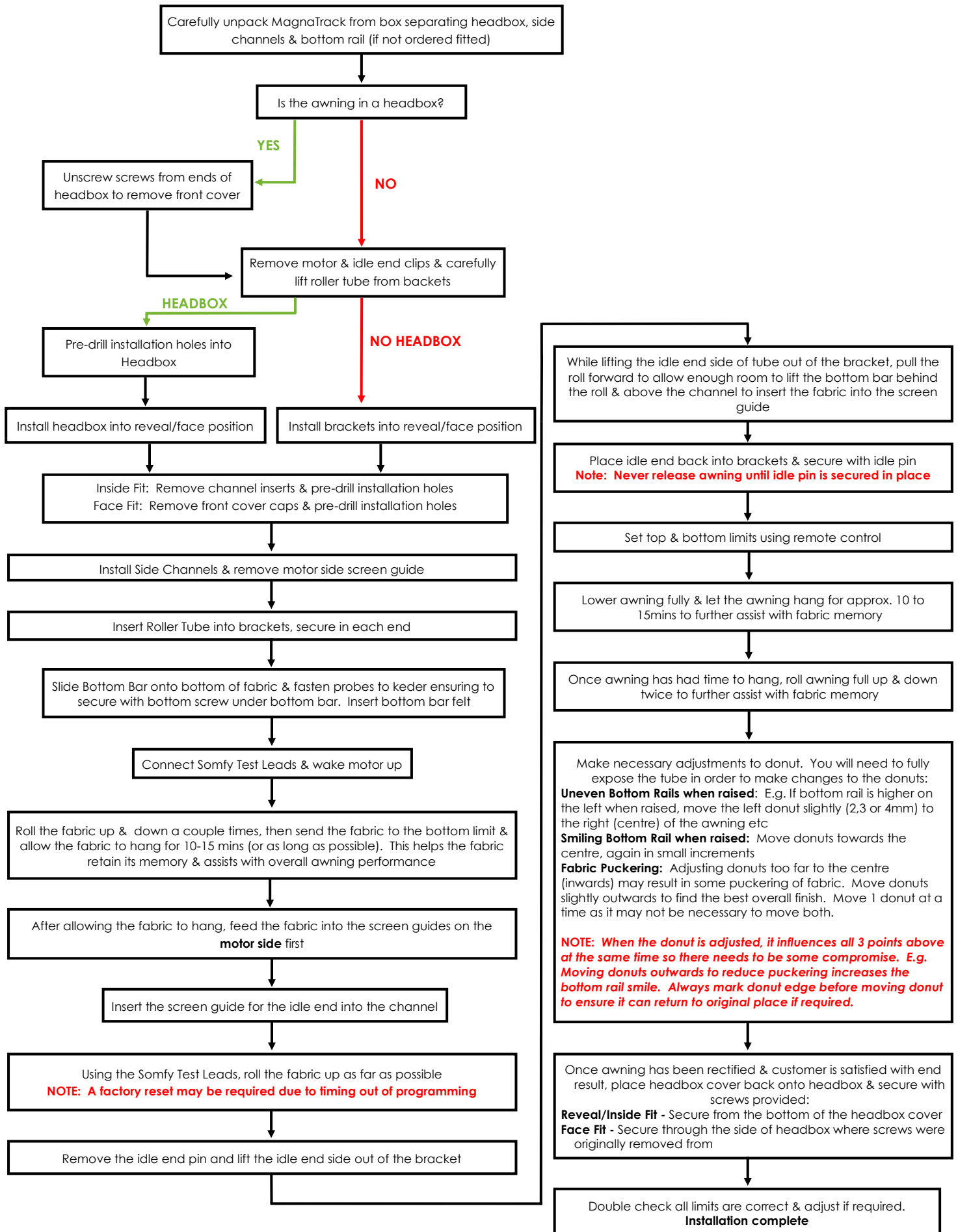


Evo MagnaTrack

Installation Best Practice



Carefully unpack MagnaTrack from box separating headbox, side channels & bottom rail (if not ordered fitted)

Is the awning in a headbox?

YES

Unscrew screws from ends of headbox to remove front cover

NO

Remove motor & idle end clips & carefully lift roller tube from brackets

HEADBOX

Pre-drill installation holes into Headbox

NO HEADBOX

Install headbox into reveal/face position

Install brackets into reveal/face position

Inside Fit: Remove channel inserts & pre-drill installation holes
Face Fit: Remove front cover caps & pre-drill installation holes

Install Side Channels & remove motor side screen guide

Insert Roller Tube into brackets, secure in each end

Slide Bottom Bar onto bottom of fabric & fasten probes to keder ensuring to secure with bottom screw under bottom bar. Insert bottom bar felt

Connect Somfy Test Leads & wake motor up

Roll the fabric up & down a couple times, then send the fabric to the bottom limit & allow the fabric to hang for 10-15 mins (or as long as possible). This helps the fabric retain its memory & assists with overall awning performance

After allowing the fabric to hang, feed the fabric into the screen guides on the motor side first

Insert the screen guide for the idle end into the channel

Using the Somfy Test Leads, roll the fabric up as far as possible
NOTE: A factory reset may be required due to timing out of programming

Remove the idle end pin and lift the idle end side out of the bracket

While lifting the idle end side of tube out of the bracket, pull the roll forward to allow enough room to lift the bottom bar behind the roll & above the channel to insert the fabric into the screen guide

Place idle end back into brackets & secure with idle pin
Note: Never release awning until idle pin is secured in place

Set top & bottom limits using remote control

Lower awning fully & let the awning hang for approx. 10 to 15mins to further assist with fabric memory

Once awning has had time to hang, roll awning full up & down twice to further assist with fabric memory

Make necessary adjustments to donut. You will need to fully expose the tube in order to make changes to the donuts:
Uneven Bottom Rails when raised: E.g. If bottom rail is higher on the left when raised, move the left donut slightly (2,3 or 4mm) to the right (centre) of the awning etc
Smiling Bottom Rail when raised: Move donuts towards the centre, again in small increments
Fabric Puckering: Adjusting donuts too far to the centre (inwards) may result in some puckering of fabric. Move donuts slightly outwards to find the best overall finish. Move 1 donut at a time as it may not be necessary to move both.

NOTE: When the donut is adjusted, it influences all 3 points above at the same time so there needs to be some compromise. E.g. Moving donuts outwards to reduce puckering increases the bottom rail smile. Always mark donut edge before moving donut to ensure it can return to original place if required.

Once awning has been rectified & customer is satisfied with end result, place headbox cover back onto headbox & secure with screws provided:

Reveal/Inside Fit - Secure from the bottom of the headbox cover
Face Fit - Secure through the side of headbox where screws were originally removed from

Double check all limits are correct & adjust if required.
Installation complete