

# Installation Accreditation Program

Weathermaster®

---

How many installers are required  
for a Kona Awning install?

# Why look at developing this?

- Feedback from Installers & Customers
- Improved customer experience
- Installation Consistency

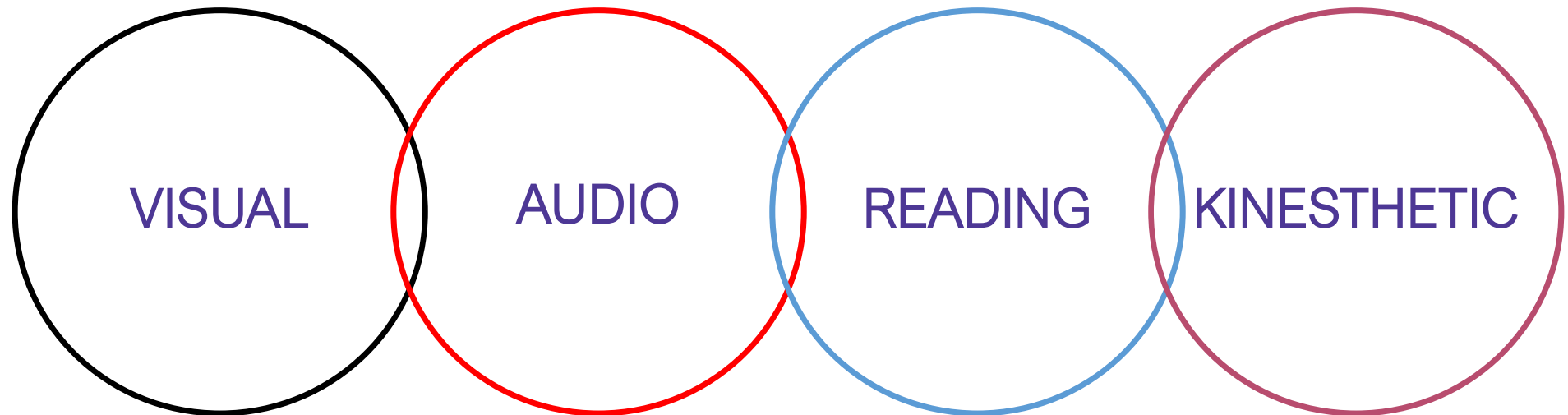
# What is the program?

- A dedicated program aimed entirely at building the skillset and knowledge of installers nationwide
  - Create an understanding in what's involved in the install process
  - Build knowledge of onsite troubleshooting
  - Learn from one another's experiences



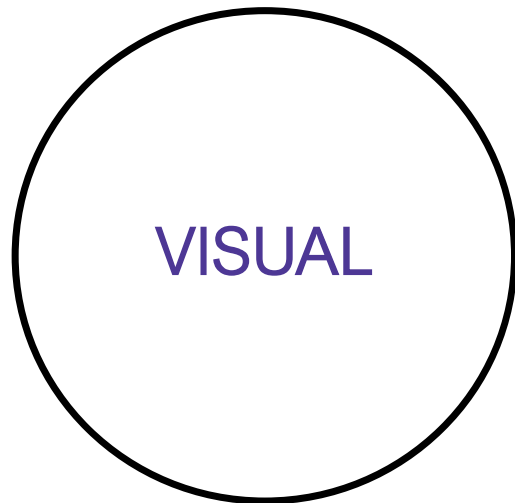
# VARK

---



# VARK

---



- Diagrams
- Charts
- Product Blow Ups



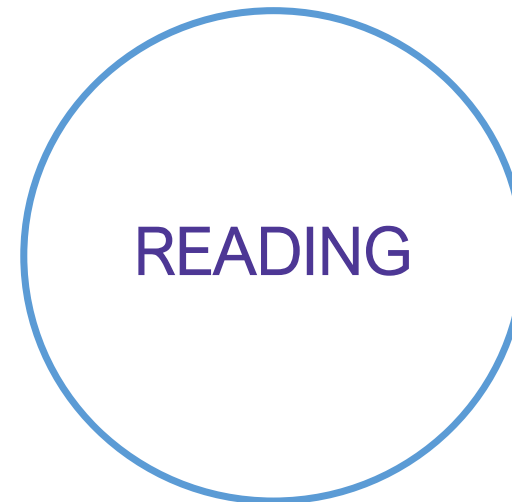
AUDIO

- Listening
- Discussions
- Talking
- Questioning
- Video

# VARK

---

- Lists
- Notes
- Handouts
- Written Instructions
- Text Information
- Manuals



# VARK

---

- Practical Hand-on Exercises
- Trial & Error
- Examples





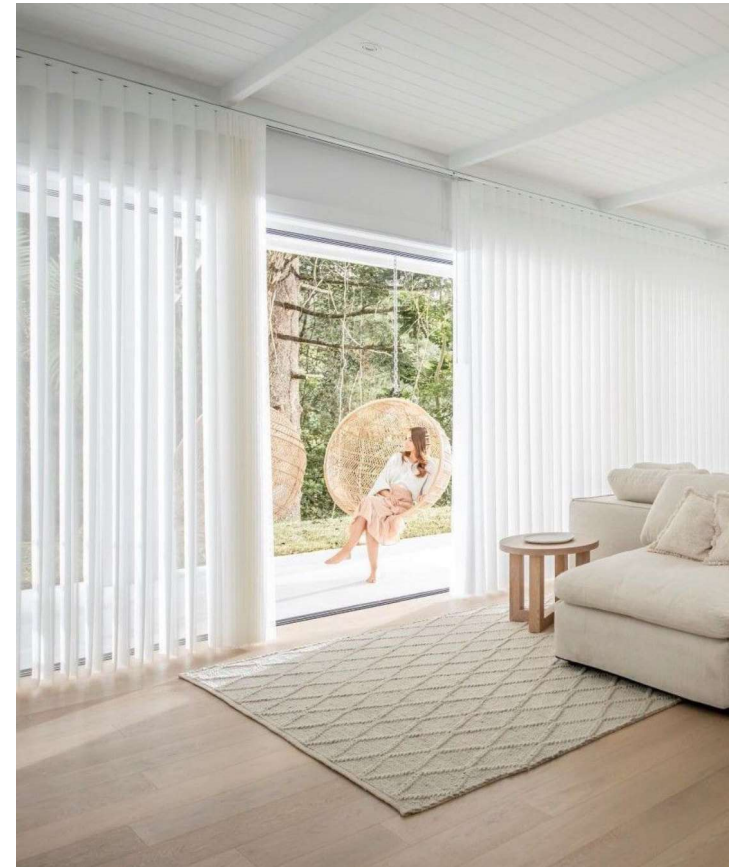
# Benefits for Installers

- Installation Knowledge
- Product Knowledge
- Enhanced onsite Troubleshooting Skills
- Thinking outside the square



# The Details

- **Locations:** Auckland & Christchurch
- **Length:** TBC - 1 to 2 days
- **Number of Attendees:** Between 8 - 12 installers at any one time
- **Frequency:** To be determined
- **Products to be covered:** All products starting with Shutters
- **Costs:** No cost to attend the actual training - Only need to cover flights



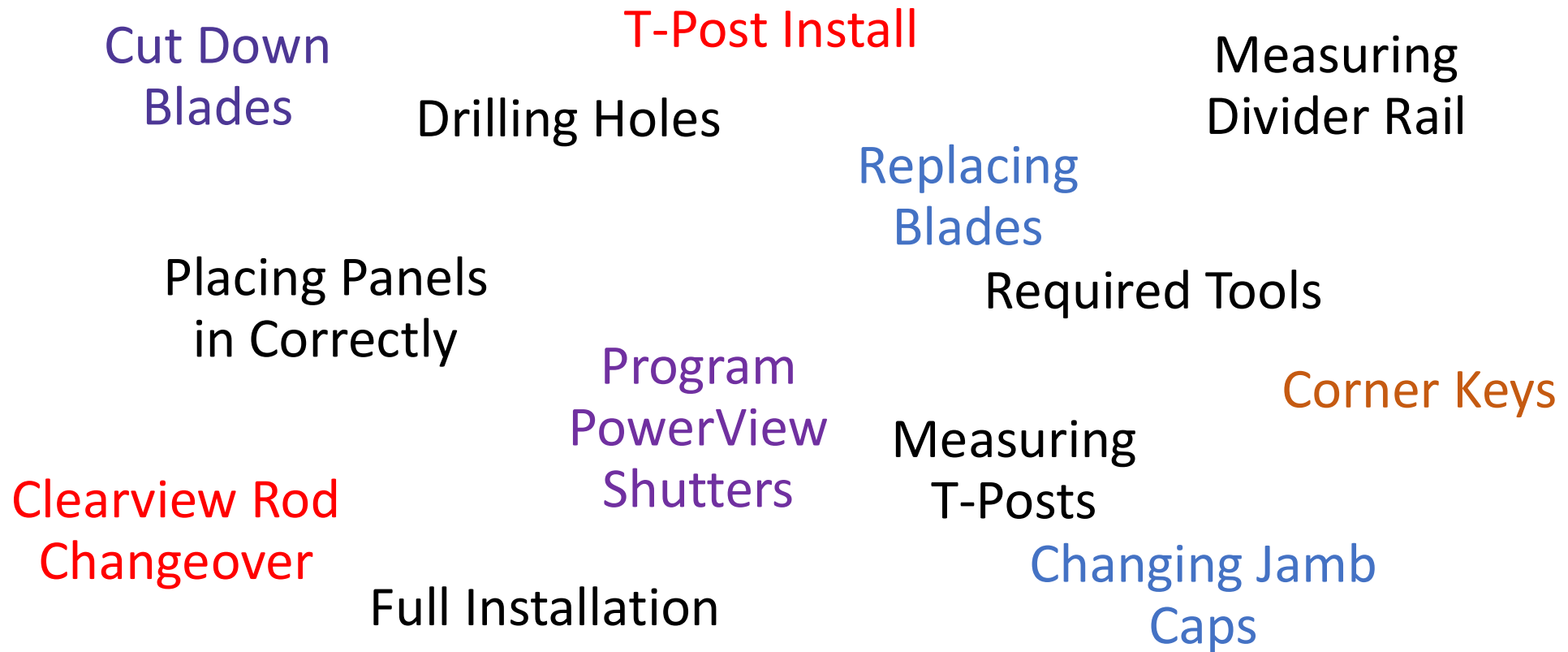
# What will be covered?

- Product breakdown
- Understanding Product Terminology
- Recognising the different parts of the product
- When to use the different application options
- Do's and Don'ts
- Factory Tour with specific product outcome
- Best Practice - Measuring, Installation
- Obstruction Awareness
- Troubleshooting 101
- MyNZWS Overview & Navigation



# Kinesthetic - Shutters

---



# Kinesthetic

---

Whispers   Kona Awnings   ALPHA Awnings   Roller Blinds

What should be  
covered?

# Competency

To ensure competency, we will conduct a series of assessment tasks during and possibly after the training sessions including:

- Hands on Practical Assessment's
- Real Life Scenario's
- Measuring including Check Measuring
- Completing Order Forms
- Completing Claims
- Online Quiz



# When do we go live?

---

**JULY 2021**

SUNDAY	MONDAY	TUESDAY	WEDNESDAY	THURSDAY	FRIDAY	SATURDAY
				1	2	3
4	5	6	7	8	9	10
11	12	13	14	15	16	17
18	19	20	21	22	23	24
25	26	27	28	29	30	31