

Roller Blinds Powered by QMotion®

Battery Operated Roller Blind Instruction Manual



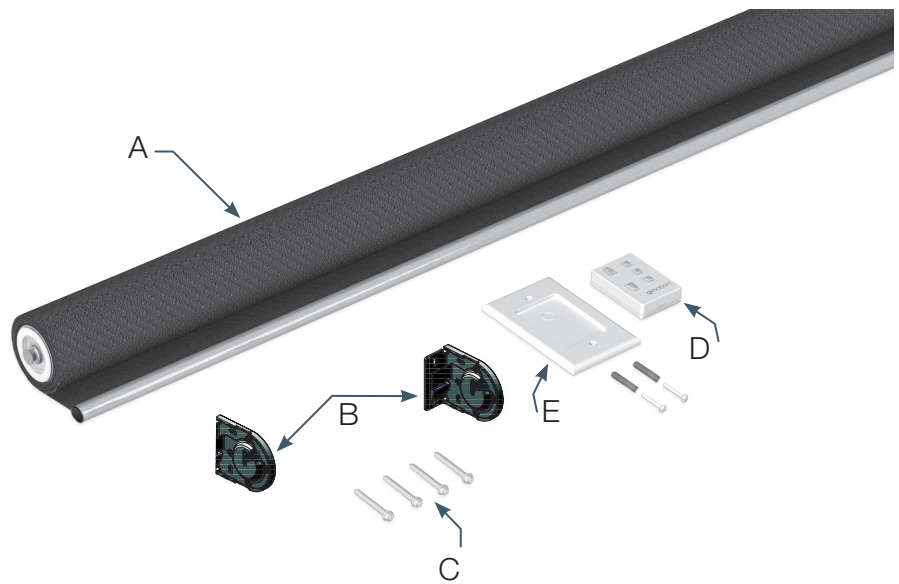
1	GETTING STARTED	2
2	DETERMINE YOUR BRACKET & ROLL DIRECTION	3
3	QBRACKET - TOP / SIDE FIX, STANDARD OR REVERSE ROLL.....	4
4	QBRACKET - FACE / BACK FIX, STANDARD OR REVERSE ROLL	5
5	QFASCIA - TOP, SIDE OR BACK FIX FASCIA BRACKETS	6
6	Finishing Installation GENERATION 3 - QMotion Standard Programming	8
7	Finishing Installation - Test Blind Operation & Install Wall Station	11
8	CHANGING THE BATTERIES	12
9	CHANGING BATTERIES QMOTION SMALL.....	13
10	TROUBLESHOOTING	14
11	CARE AND CLEANING	16

1 GETTING STARTED

VERIFY PACKAGE CONTENTS

- A. Blind
- B. Brackets
- C. Bracket Screws
- D. Remote Control*
- E. Remote Control Wall Station*

* Package contents may vary.



TOOLS NEEDED

Read and understand all instructions prior to installation. Complete all instructions prior to use.



IDENTIFY BEST POSITION

Verify there are no latches/locks, window cranks, handles, alarm sensors, curtain tie-backs, window mullions, etc. in the path the blind will travel. Remove any obstructions or adjust the mounting depth of your blind bracket.

Ensure adequate structure (wood studs, metal studs, etc) are used to mount screws. Expansion anchors or toggle bolts may be required.

Depending on your installation area, you may need to use different holes on your blind brackets than are illustrated.

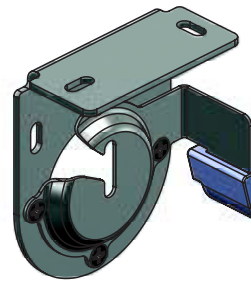
Check to make sure that there are no obstructions that will block the movement of the Blind.



2 DETERMINE YOUR BRACKET & ROLL DIRECTION

3 QBRACKET - TOP / SIDE FIX, STANDARD OR REVERSE ROLL

Brackets supplied by default in top fix configuration.
The universal bracket can be used for both standard or reverse roll blinds by simply swapping the bracket side and turning the bracket around.

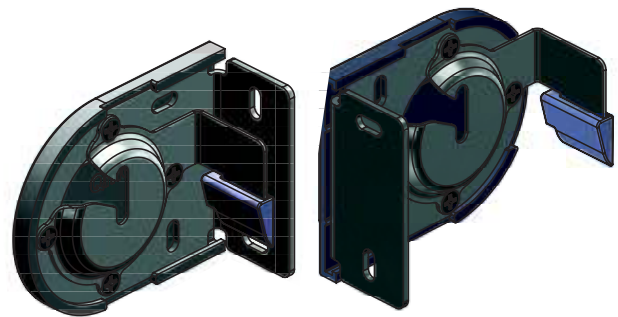


4 QBRACKET - FACE / BACK FIX, STANDARD OR REVERSE ROLL

If the brackets are to be used for face fix, or side fix.

1. Undo the 4 screws holding the bumper plate
2. Turn the bumper plate 90 degrees
3. Re-attach the 4 screws.

The bracket can now be used in the above configuration.



5 QFASCIA – TOP, SIDE OR BACK FIX FASCIA BRACKETS

Brackets supplied with the fascia are universal and can be used in all installation types. Swapping the bracket sides and turning them around will enable both standard roll and reverse roll configurations.

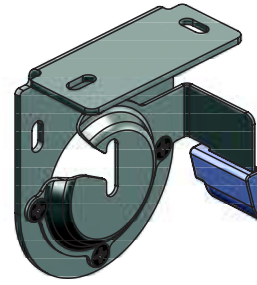


3 QBRACKET - TOP / SIDE FIX, STANDARD OR REVERSE ROLL

STEP 3A. REVEAL MOUNT/STANDARD ROLL INSTALLATION

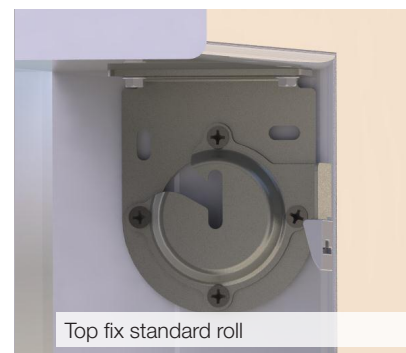
Position the blind bracket. Use a pencil to mark the bottom of the slotted screw hole. This allows minor levelling adjustments if needed later. Repeat this on other side of window.

Note: The bottom bar stop (clear wedge) will be on the side of the bracket nearest to the window for standard roll and facing the room for reverse roll.



STEP 3B.

Securely fasten the brackets using the supplied screws.



STEP 3C.

Mount right and left universal brackets.

Note: If adequate structure is not present in mounting area, appropriate expansion anchors or toggle bolts should be used.

If blind is to be installed reverse roll, ensure at least 2-5cm is left free at the back of the bracket so the blind can be slot into the brackets.

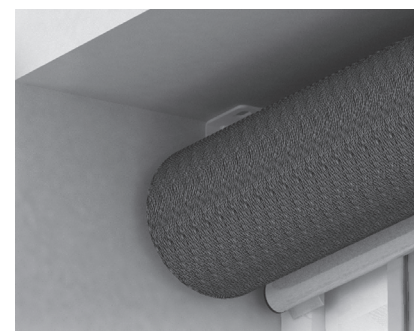
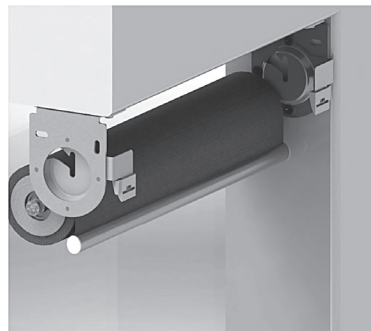


STEP 3D.

Test fit your QMotion blind assembly by hanging it in the blind brackets.

Ensure the spindles on both ends are seated securely in the blind brackets. If they are not, safely rotate the blind assembly until the spindles seat properly and bottom bar is in the open position, oriented as shown.

Check vertical gap for evenness and adjust bracket vertical position accordingly.



4 QBRACKET - FACE / BACK FIX, STANDARD OR REVERSE ROLL

STEP 4A.

QBRACKET - FACE / BACK FIX, STANDARD OR REVERSE ROLL

For face fix, or side fix, the bracket will need to have the bumpers rotated 90 degrees.

1. Undo the 4 screws holding the bumper plate.
2. Turn the bumper plate 90 degrees.
3. Re-attach the 4 screws.
4. The bracket can now be used for Face or Back mount.



STEP 4B.

Mount right and left face mount brackets.

Note: If adequate structure is not present in mounting area, appropriate expansion anchors or toggle bolts should be used.

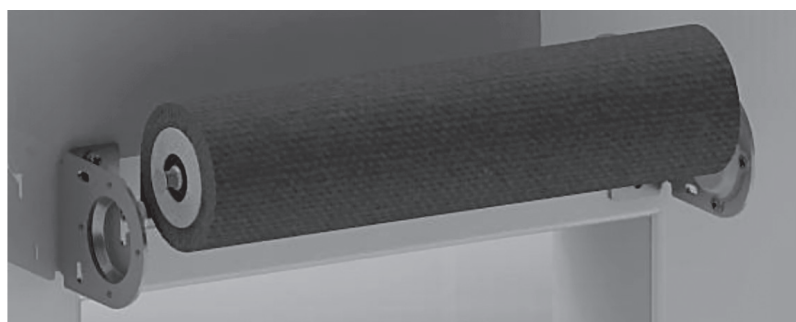


STEP 4C.

Test fit your QMotion blind assembly by hanging it in the blind brackets.

Ensure the spindles on both ends are seated securely in the blind brackets. If they are not, safely rotate the blind assembly until the spindles seat properly and bottom bar is in open position, oriented as shown.

Check vertical overlap for evenness and adjust bracket vertical position accordingly.



5 QFASCIA – TOP, SIDE OR BACK FIX FASCIA BRACKETS

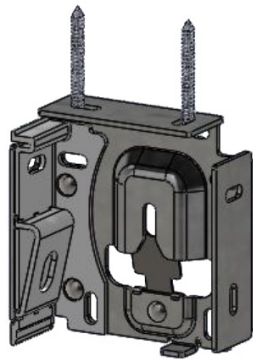
STEP 5A. QFASCIA – TOP, SIDE OR BACK FIX FASCIA BRACKETS

Brackets supplied with the fascia are universal and can be used in all installation types. Swapping the bracket sides and turning them around will enable both standard roll and reverse roll configurations.

STEP 5B.

Position the fascia bracket ready for mounting. Use a pencil to mark the bottom of the slotted screw hole. This allows minor levelling adjustments if needed later. Repeat this on other side of window.

The fascia brackets can be mounted top, back or side for universal use.



STEP 5C.

Determine the roll type of the blind.

If the blind is reverse roll, ensure the Bumper section is facing the front of the room.

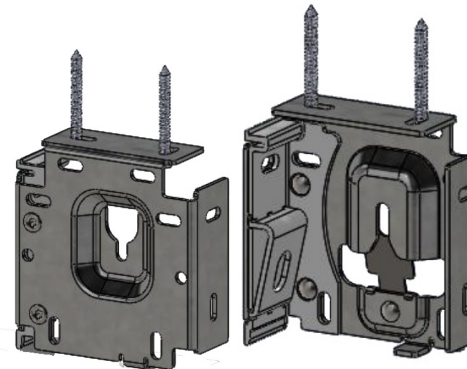
If the blind is standard roll, ensure the Bumper section is facing the window.



STEP 5D.

Mount right and left fascia brackets.

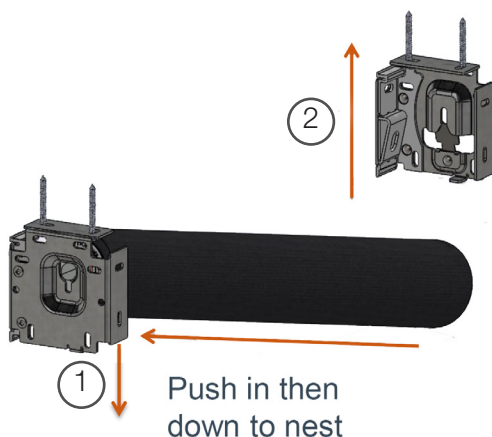
Note: If adequate structure is not present in mounting area, appropriate expansion anchors or toggle bolts should be used.



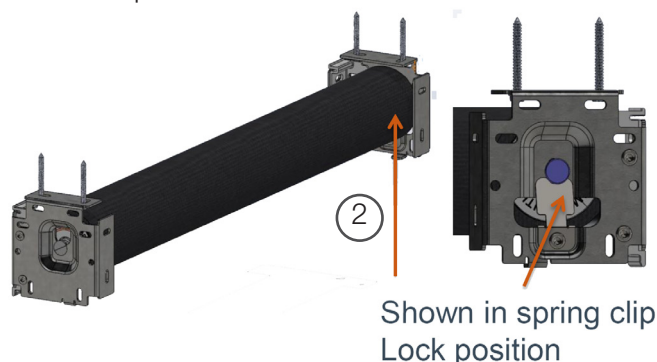
STEP 5E.

Insert roller blind into fascia brackets.

1. Insert Roller blind into the Fascia bracket keyhole that does not have the locking plate. For Standard roll, this is the LEFT bracket, for Reverse roll, this is the RIGHT bracket.



2. Once secured on one side, lift the roller blind up into the other Fascia bracket (containing the locking plate). The spring loaded locking plate will snap as the spindle moves past it and locks the blind into position. Ensure the blind is level within the brackets and the spindle is sitting hard against the locking plate.

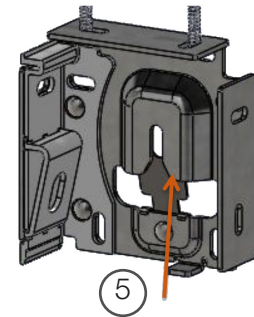
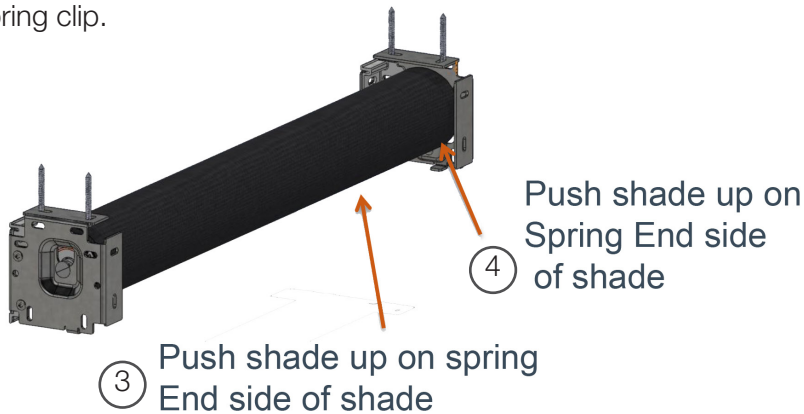


5 QFASCIA - TOP, SIDE OR BACK FIX FASCIA BRACKETS - CONTINUED

STEP 5F.

To remove roller shade.

1. Push blind up on the "spring clip" end of the shade.
2. Insert screwdriver to flex "spring clip" while pushing shade up.
3. With blind pushed up and spring clip flexed out of the way, pull shade down to release bracket from spring clip.



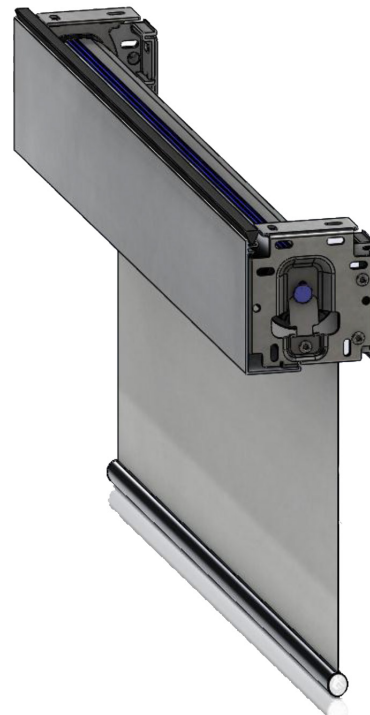
View of location for screw Driver to flex spring clip for Shade removal

STEP 5G.

Reveal mounted Fascia.

For Reveal mounted Fascia, side caps are not provided.

Clip the Fascia panel into position at the top of the bracket and snap the bottom down into the locator clip at the bottom of the bracket.



STEP 5H.

Face mounted Fascia.

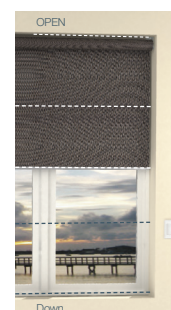
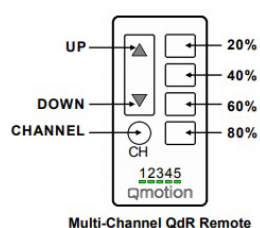
1. For face mounted Fascia, side caps will be included.
2. Clip the Fascia panel into position at the top of the bracket and snap the bottom down into the locator clip at the bottom of the bracket.
3. Once secured, clip the fascia end caps on to each side (ensure the correct left and right caps are used).



6 FINISHING INSTALLATION GEN 3

STEP 6A. QMOTION STANDARD PROGRAMMING

There is only one version of software for Motor Generation 3.



STEP 6B. PAIR REMOTE CONTROL

1. Press and Release the CHANNEL button to select a channel (1-5).
2. To pair the remote control, simply pull down on the bottom bar/ rail more than 30mm. The blind will JOG in response.
3. Use a paper-clip to PRESS once the PROGRAM button on the back of the remote (The channel LEDs will scroll back and forth when in program mode).
4. PRESS and RELEASE the UP button on the remote, the blind will JOG then.

STEP 6C. REMOVE BATTERY METHOD

Gently pull down on the bottom bar to expose the battery cut-out on the blind tube. Place a hand firmly on the blind tube to stop the blind automatically retracting. The blind will hesitate, and then stall, allowing you to gain access to the battery insert. Remove the Battery cover (if installed).

Remove one battery and reinsert the battery.

1. PRESS and RELEASE the DOWN button (Blind will move to bottom Limit Position).
2. UNROLL the FABRIC ROLL TUBE to expose the battery cover.

3. REMOVE battery cover and REPLACE with new batteries.
4. REPLACE battery cover (Blind will now respond to remote commands).
5. PRESS and RELEASE the UP button to roll fabric back onto the tube.

STEP 6D. SET BOTTOM LIMIT

1. PRESS and RELEASE the DOWN button. (Blind will move to current bottom Limit Position).
2. PRESS and HOLD the DOWN button until blind JOGS.
3. PULL the bottom bar/Rail more than 30 mm (blind will JOG in response).
4. ADJUST blind to desired bottom Limit. (The DOWN button is disabled while setting the bottom Limit, adjust by pressing the UP button or manually roll shade by hand).
5. PRESS and HOLD the DOWN button until blind JOGS.

STEP 6E. INTERMEDIATE STOPS

The four intermediate stops will be automatically set, once the bottom limit is set.

6 FINISHING INSTALLATION GEN 3

QMOTION STANDARD PROGRAMMING

STEP 6F.

Use Special Learn Command when:

- Copying a channel
- Adding an additional remote to the blind

Special Learn Command

(Blind at Upper Limit Position - manually roll shade up by hand if necessary)

1. Use a paper-clip to PRESS the PROGRAM button on the back of the remote. (The channel LEDs will scroll back and forth when in program mode).
2. PRESS and HOLD the CHANNEL button until the blind moves.
3. PULL the bottom bar/Rail more than 30 mm, then blind will JOG in response).
4. Use a paper-clip to PRESS the PROGRAM button on the back of the remote. (The channel LEDs will scroll back and forth when in program mode).
5. PRESS and RELEASE the UP button. (Blind will JOG, move to Upper Limit Position, then JOG again).

Delete / unlearn a remote (or channel)

(Blind at Upper Limit)

1. PRESS and RELEASE the CHANNEL button to select the channel currently paired to the blind (Skip

channel selection for Single-Channel Remotes).

2. Use a paper-clip to PRESS the PROGRAM button on back of the remote. (The channel LEDs will scroll back and forth when in program mode).
3. PRESS and HOLD the UP button until Shade moves downward.
4. PULL the bottom bar/Rail more than 30 mm (Blind will JOG in response).
5. Use a paper-clip to PRESS the PROGRAM button on back of the remote (The channel LEDs will scroll back and forth when in program mode).

Factory (master) reset

(Will remove all paired remotes)

(Blind at Upper Limit Position)

1. Use a paper-clip to PRESS the PROGRAM button on back of the remote (The channel LEDs will scroll back and forth when in program mode).
2. PRESS and HOLD the DOWN button UNTIL the blind moves downward.
3. PULL the bottom bar/Rail more than 30 mm (Blind will JOG in response).

STEP 6G. SETTING CUSTOM POSITION

Customise the position of 20% 40% 60% 80% buttons.

It is possible to custom change any of the intermediate stops. This is useful if you need to align multiple blinds with varying drops to the same intermediate position.

1. PRESS and RELEASE the CUSTOM button you want to program. (Blind will move to current bottom Limit Position).
2. PRESS and HOLD the CUSTOM button until blind JOGS.
3. PULL the bottom bar/Rail more than 30 mm (blind will JOG in response).
4. ADJUST blind to desired Custom Limit. (The CUSTOM button is disabled while setting the custom Limit, adjust by pressing the UP button or manually roll shade by hand).
5. PRESS and HOLD the CUSTOM button until blind JOGS.

6 FINISHING INSTALLATION GEN 3

QMOTION STANDARD PROGRAMMING

STEP 6H. SET A CUSTOM TOP LIMIT

Set a Custom TOP Limit.

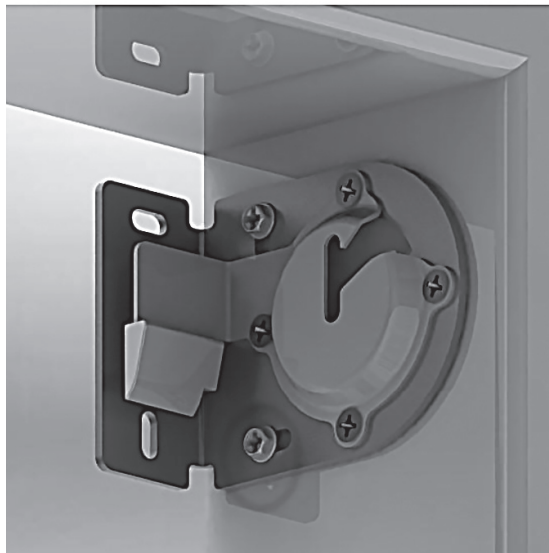
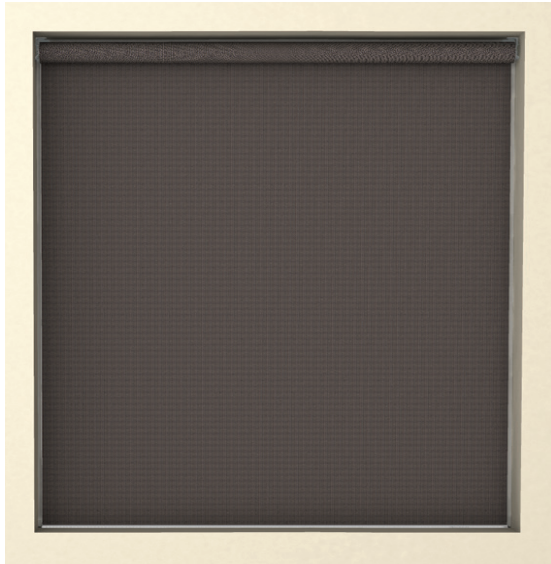
It is possible to set a custom top limit on the blind. Although the blind will return to this location each time, a hard set to the bumpers is required every 50 operations (this happens automatically).

1. PRESS and RELEASE the UP button. (Blind will move to current bottom Limit Position).
2. PRESS and HOLD the UP button until blind JOGS.
3. PULL the bottom bar/Rail more than 30 mm (blind will JOG in response).
4. ADJUST blind to desired Custom UPPER Limit.
5. PRESS and HOLD the UP button until blind JOGS.

7 FINISHING INSTALLATION - TEST BLIND OPERATION & INSTALL WALL STATION

STEP 7A. TEST BLIND OPERATION

1. Press the DOWN button to move the blind to the Down position.
2. While down, ensure that the blind appears straight, level, and that the gaps or overlaps are equal.
3. Safely make adjustments to the brackets as needed.
4. When satisfied, complete installation by adding one more Screw to each Blind Bracket.



STEP 7B. INSTALL WALL MOUNT

Step 1

Determine a convenient location for your Remote Control Wall Mount. This is typically near an entrance to a room but can be placed anywhere in a room.

Step 2

Hold the Remote Control Wall Mount in the desired location and use a level to ensure it is straight and/or level with other nearby wall plates. Mark holes with a pencil.

Step 3

Use the included screws and anchors to fasten the wall station to the wall. Your Remote Control will stick to the wall.



8 CHANGING THE BATTERIES

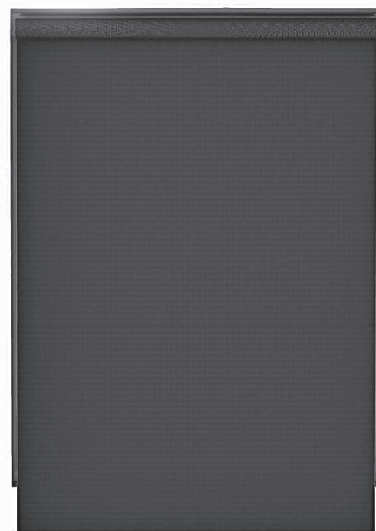
STEP 8A.

Move the blind to the DOWN position. If the blind batteries are completely depleted, you may skip to step C.



STEP 8B.

Pull the blind past the Down position. The blind will then move to the 75% position.



STEP 8C.

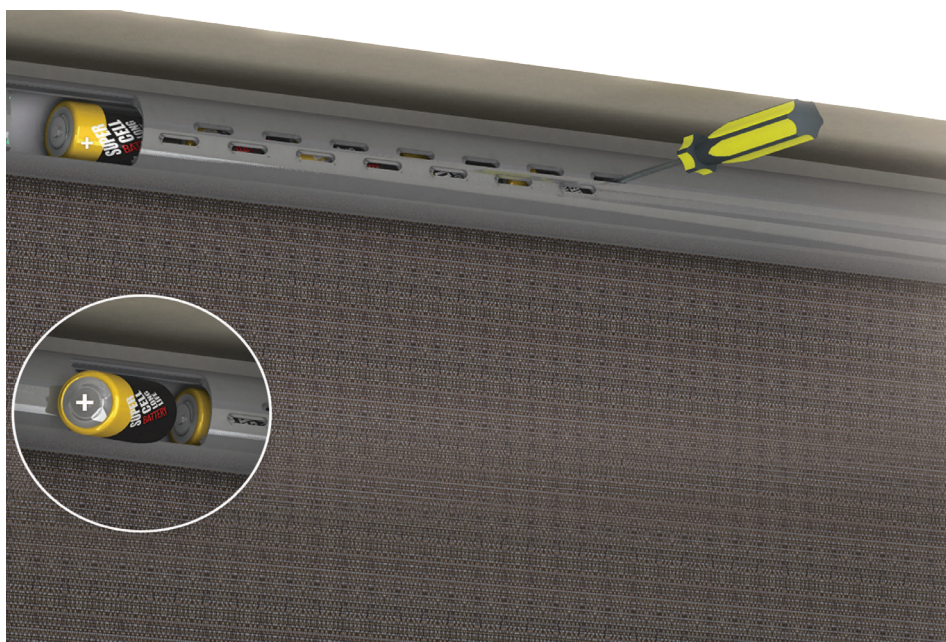
Carefully pull the blind downward in one continuous motion until the battery window is exposed. Some models may include a battery cover. Remove the cover to expose battery access.



8 CHANGING THE BATTERIES

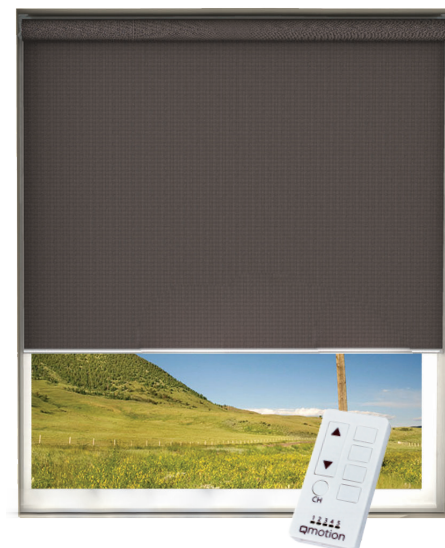
STEP 8D.

Replace all batteries with fresh D-Cell batteries. Orient all batteries with the positive end as shown.



STEP 8E.

Press any button. The blind moves to the OPEN position. The blind will now resume normal operation.



9 CHANGING BATTERIES QMOTION SMALL

STEP 9A.

Follow steps, 8A, 8B & 8C.
Remove Battery pack from motor.



STEP 9B.

Replace all three batteries with fresh AA-cell batteries.



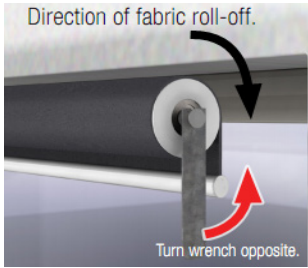
FOLLOW STEP 9E

STEP 9C.


Insert battery pack back into motor.
Orient battery pack with the positive end as shown.



10 TROUBLESHOOTING

SYMPTOM	PROBLEM	SOLUTION
When blind is in the UP position, fabric hangs over one end of the blind and may interfere with brackets	Telescoping fabric	Identify the direction of the overhang. Follow steps of the battery changing procedure to expose the blind tube. Apply a piece of masking tape horizontally on the blind tube on the side where fabric overhangs tube. Press any button on the remote. Verify if the telescoping has been corrected and repeat this process as needed.
When the blind rolls to the full UP position, it slowly sags down about 100mm	Pre wind is required on the spring (Refer to QMotion pre winding instruction guide)	 <p>Determine spring end of blind. Standard Roll blind's spring is on the blind's right end. Reverse Roll blind's spring is on the blind's left end.</p> <ul style="list-style-type: none"> • Remove the spring end from its mounting bracket. To prevent damage to the motor end bracket, do not move spring end more than 100mm from bracket. • Place the pre wind wrench (Part Number: 34.445.000) on the spindle as shown. Give one full rotation in the direction opposite of fabric roll-off. Do not over-wind the spring. • Do not release the wrench until the spindle is seated securely in the mounting bracket. • While holding spindle with the wrench, return the blind to its mounting bracket. • When the spindle is fully seated in mounting bracket, remove pre wind wrench. • Any pre winds on the spring will unwind when the spindle is removed from the bracket.
Blind is moving faster in one direction	Spring miscalculation or spring assembly may have become dislodged during transit	A QMotion blind should travel at similar speeds in either direction. E.g. Time the operation of the blind from fully OPEN to fully CLOSED. Now compare this time for fully CLOSED to fully OPEN. If there is a significant difference in the timing (more than 4 seconds), it may indicate a Spring miscalculation or faulty spring. Contact the Technical Help desk for further advice. Do not attempt to remove the spring assembly from the blind.

10 TROUBLESHOOTING - CONTINUED

SYMPTOM	PROBLEM	SOLUTION
After replacing batteries, blind is not responding to remote	Not responsive after battery change	<p>Firstly, make sure that the positive end of the battery is positioned correctly (refer to step 8d). If this does not resolve the issue, try the following procedure:</p> <ul style="list-style-type: none"> • Make sure batteries are in the motor Roll the blind up at least 30cm manually by hand Pull bottom bar down more than 300mm, this will wake the motor' • Press and hold the UP button until the blind starts to roll up, then release the Up button. If blind is still not responding, try the bellow 'paperclip method'.
Blind is unresponsive to a specific button	Stuck in Learn Mode	Wait 5 minutes for the blind to automatically exit Learn Mode. If the blind still does not respond, follow instructions to change batteries, remove and reinsert one battery, then try again.
Blind will not pair to remote control even after a battery has been removed and replaced	Blind may be stuck in Transport Sleep Mode	 <p>It may be necessary to wake the motor manually. Remove one battery from the blind (follow battery removal instructions). Use a paperclip or piece of wire bent into a 'U' shape to make contact between the two metal contacts on the left of where the first battery is inserted (see image left). Now re-insert the battery and roll the blind up about 300mm by hand. Now follow pairing instructions to pair the remote control to the blind.</p>
When I press UP on the remote, the blind goes all the way down to the floor	There may be a top limit set at the bottom of the blind	It is possible to set a top limit on the blind. The Top limit may have been inadvertently set at the bottom of the blind. Follow the instructions on the Programming page to set a Customer Top Limit and move the top limit to about 50% open. Now you can perform a full reset as per the reset instructions. This will clear out any top limits and enable the blind to be factory reset. Ensure the remote control is re-paired and the bottom limit is set after a full reset.

11 CARE AND CLEANING

Care and Cleaning

1. Surface dust may be removed with a gentle brush, feather duster or clean, dry cloth.
2. Wipe with a dry sponge.
3. An art gum rubber is excellent for removing small marks.

Note

This instruction pamphlet is a guide to the installation, use and maintenance of the Roller Blinds and Internal Sunscreens as supplied by Hunter Douglas Limited ('HDL') and HDL does not warrant the accuracy of the information contained in this pamphlet. The installer must rely upon their own skill and expertise.

This pamphlet is based on general data pertaining to the construction, material properties and working methods known to us at the time of issue and is therefore subject to changes or amendments at any time without notice and the right to change or amend is hereby expressly reserved by HDL.

