

# Roller Blinds with Qmotion Technology

## Battery Operated Roller Blind Instruction Manual



Discover  
beauty in motion

# CONTENTS

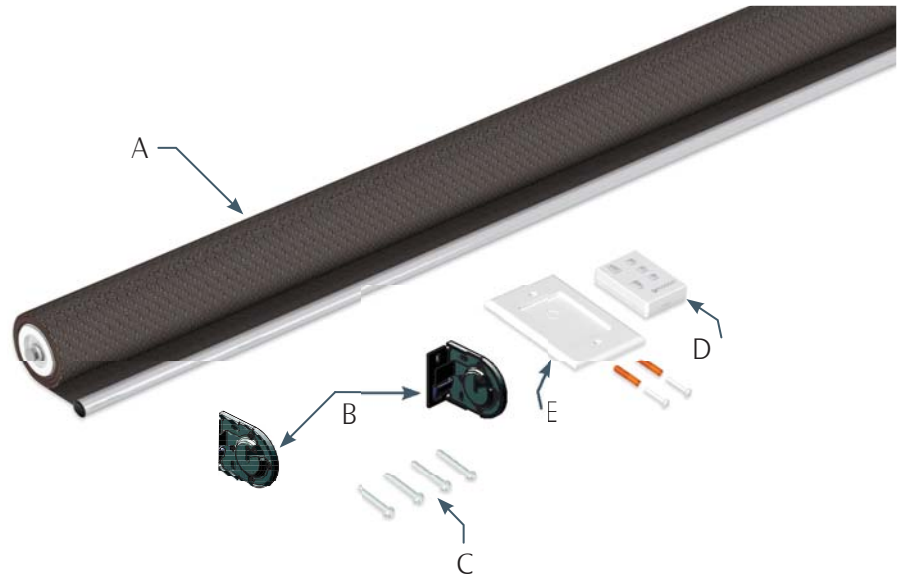
---

<b>1</b>	GETTING STARTED.....	3
<b>2</b>	DETERMINE YOUR BRACKET & ROLL DIRECTION.....	4
<b>3</b>	QBRACKET - TOP / SIDE FIX STANDARD OR REVERSE ROLL.....	5
<b>4</b>	QBRACKET - FACE / BACK FIX, STANDARD OR REVERSE ROLL.....	6
<b>5</b>	QEDGE – FACE / SIDE MOUNT QEDGE BRACKETS .....	7
<b>6</b>	QFASCIA - TOP, SIDE or BACK FIX FASCIA BRACKETS .....	8
<b>7</b>	FINISHING INSTALLATION.....	10
	Finishing Installation - <i>continued</i> .....	11
	Finishing Installation - <i>continued</i> .....	12
	Finishing Installation - <i>continued</i> .....	13
<b>8</b>	CHANGING THE BATTERIES .....	14
<b>10</b>	QMOTION HARDWIRE INSTALLATION INSTRUCTIONS .....	15
<b>9</b>	CHANGING BATTERIES QMOTION SMALL.....	15
<b>11</b>	QMOTION DUAL BRACKET.....	16
<b>12</b>	QCONNECT MINI.....	16
	Qconnect mini - continued .....	17
<b>13</b>	TROUBLESHOOTING.....	18
	Troubleshooting - continued .....	19
<b>14</b>	CARE AND CLEANING .....	19

## Verify Package Contents

- A. Blind
- B. Brackets
- C. Bracket Screws
- D. Remote Control\*
- E. Remote Control Wall Station\*

\* Package contents may vary.



## Tools Needed

Read and understand all instructions prior to installation. Complete all instructions prior to use.



## Identify Best Position

Verify there are no latches/locks, window cranks, handles, alarm sensors, curtain tie-backs, window mullions, etc. in the path the blind will travel. Remove any obstructions or adjust the mounting depth of your blind bracket.

Ensure adequate structure (wood studs, metal studs, etc) are used to mount screws. Expansion anchors or toggle bolts may be required.

Depending on your installation area, you may need to use different holes on your blind brackets than are illustrated.

Check to make sure that there are no obstructions that will block the movement of the Blind.

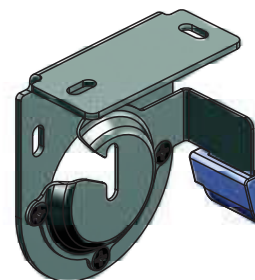


## 2 DETERMINE YOUR BRACKET & ROLL DIRECTION

---

### ▶ 3. QBRACKET - TOP / SIDE FIX STANDARD OR REVERSE ROLL

Brackets supplied by default in top fix configuration. The universal bracket can be used for both standard or reverse roll blinds by simply swapping the bracket side and turning the bracket around.

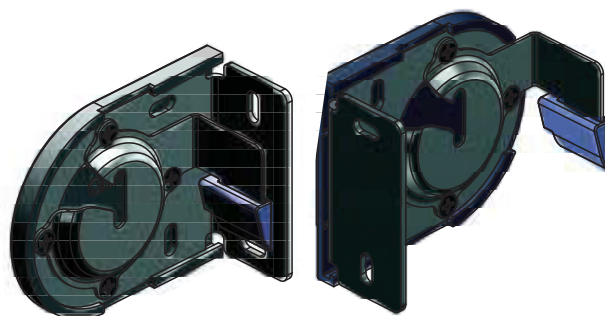


### ▶ 4. QBRACKET - FACE / BACK FIX, STANDARD OR REVERSE ROLL

If the brackets are to be used for face fix, or side fix

- 1) Undo the 4 screws holding the bumper plate
- 2) Turn the bumper plate 90 degrees
- 3) Re-attach the 4 screws.

The bracket can now be used in the above configuration..



### ▶ 5. QEDGE – FACE / SIDE MOUNT QEDGE BRACKETS

The Qedge bracket is designed to be used in face fix or side mount installations only. The bracket can only be used for standard roll blinds.



### ▶ 6. QFASCIA - TOP, SIDE or BACK FIX FASCIA BRACKETS

Brackets supplied with the fascia are universal and can be used in all installation types. Swapping the bracket sides and turning them around will enable both standard roll and reverse roll configurations.

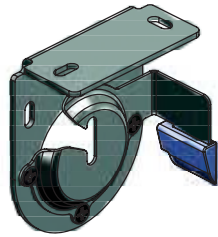


# 3 QBRACKET - TOP / SIDE FIX STANDARD OR REVERSE ROLL

## ► Step 3a. Reveal Mount/Standard Roll Installation

Position the blind bracket. Use a pencil to mark the bottom of the slotted screw hole. This allows minor levelling adjustments if needed later. Repeat this on other side of window.

Note: The bottom bar stop (clear wedge) will be on the side of the bracket nearest to the window for standard roll and facing the room for reverse roll.



## ► Step 3b.

Securely fasten the brackets using the supplied screws.



## ► Step 3c.

Mount right and left universal brackets.

Note: If adequate structure is not present in mounting area, appropriate expansion anchors or toggle bolts should be used.

If blind is to be installed reverse roll, ensure at least 2-5cm is left free at the back of the bracket so the blind can be slot into the brackets.



## ► Step 3d.

Test fit your QMotion Blind Assembly by hanging it in the blind Brackets.

Ensure the spindles on both ends are seated securely in the blind Brackets. If they are not, safely rotate the blind Assembly until the spindles seat properly and bottom bar is in the open position, oriented as shown.

Check vertical gap for evenness and adjust bracket vertical position accordingly.



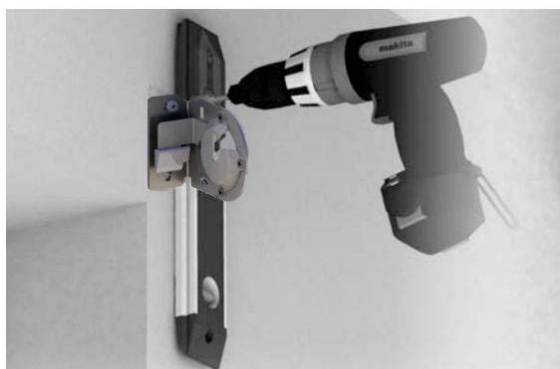
## 4 QBRACKET - FACE / BACK FIX, STANDARD OR REVERSE ROLL

### ▶ 4a. QBRACKET - FACE / BACK FIX, STANDARD OR REVERSE ROLL

For face fix, or side fix, the bracket will need to have the bumpers rotated 90 degrees.

- 1) Undo the 4 screws holding the bumper plate
- 2) Turn the bumper plate 90 degrees
- 3) Re-attach the 4 screws.

The bracket can now be used for Face or Back mount.



### ▶ Step 4b.

Mount right and left face mount brackets.

Note: If adequate structure is not present in mounting area, appropriate expansion anchors or toggle bolts should be used.



### ▶ Step 4c.

Test fit your QMotion Blind Assembly by hanging it in the Blind Brackets.

Ensure the spindles on both ends are seated securely in the Blind Brackets. If they are not, safely rotate the Blind Assembly until the spindles seat properly and bottom bar is in open position, oriented as shown.

Check vertical overlap for evenness and adjust bracket vertical position accordingly.



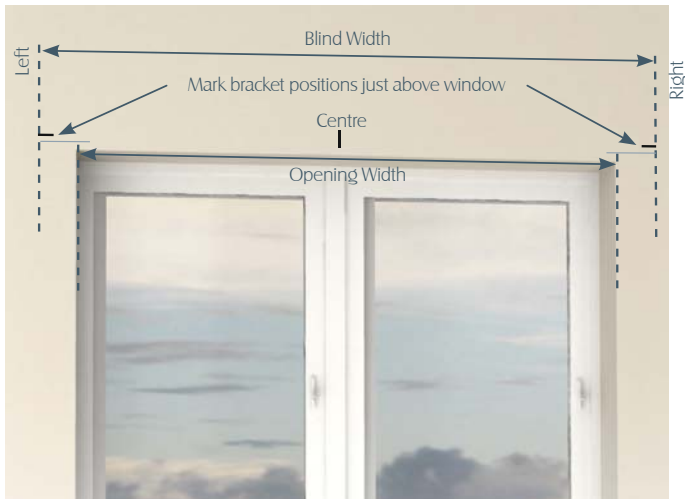
# 5 QEDGE – FACE / SIDE MOUNT QEDGE BRACKETS

## ► 5a. QEDGE – FACE / SIDE MOUNT QEDGE BRACKETS

The Qedge bracket is designed to be used in face fix or side mount installations only. The bracket can only be used for standard roll blinds.

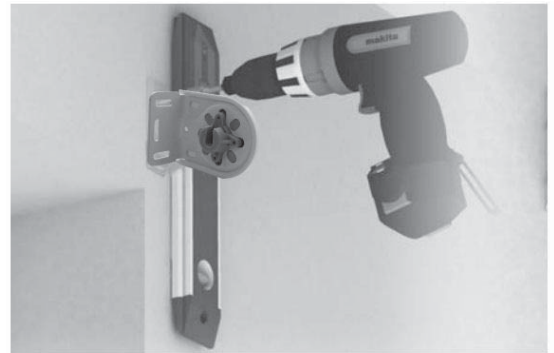
### ► Step 5b.

Centre the “width” dimension from blind width over window, marking the centre, left and right positions. Mark a level horizontal line under the right and left marks just above window opening.



### ► Step 5c.

Position right and left face mount brackets aligned with marks and mark the bottom of the slotted holes. Centre drill at mark and drill a locator hole.

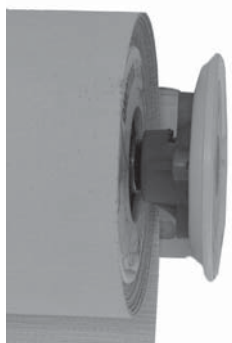


### ► Step 5d.

Mount right and left face mount brackets.

Ensure the spindle slots are facing upwards on each bracket.

Note: If adequate structure is not present in mounting area, appropriate expansion anchors or toggle bolts should be used.



### ► Step 5e.

Slot the Qmotion Blind down into the brackets, ensure that the flat section on the spindles (on each side) lines up with the flat section on the Edge bracket adapters.

The blind may need some downward force to sit securely within the bracket adapters.

In most installations, the Rubber bumpers will not be required on the Qedge brackets as the bottom bar will torque up against the bracket and the blind roll, however when Edge 55mm brackets are supplied, the rubber bumpers will also be supplied and may need to be secured to the bracket using the included mounting screws.



## 6 QFASCIA - TOP, SIDE or BACK FIX FASCIA BRACKETS

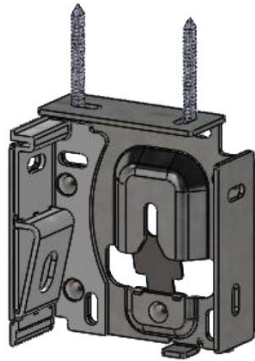
### ► 6a. QFascia - Top, Side or Back Fix Fascia Brackets

Brackets supplied with the fascia are universal and can be used in all installation types. Swapping the bracket sides and turning them around will enable both standard roll and reverse roll configurations.

#### ► Step 6b.

Position the fascia bracket ready for mounting. Use a pencil to mark the bottom of the slotted screw hole. This allows minor levelling adjustments if needed later. Repeat this on other side of window.

The fascia brackets can be mounted top, back or side for universal use.



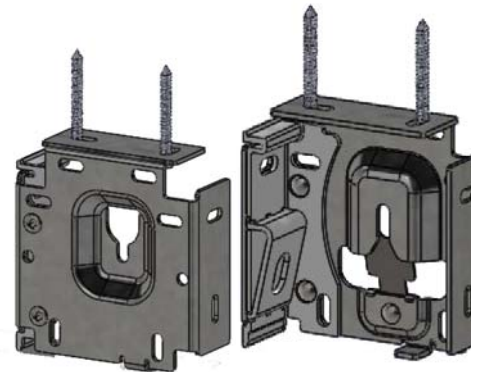
#### ► Step 6c. Determine the roll type of the blind.

If the blind is reverse roll, ensure the Bumper section is facing the front of the room.  
If the blind is standard roll, ensure the Bumper section is facing the window.



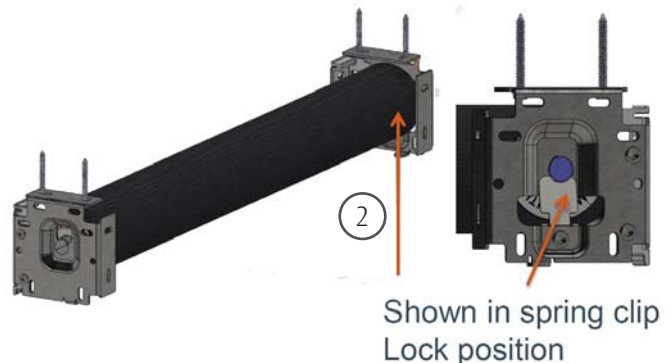
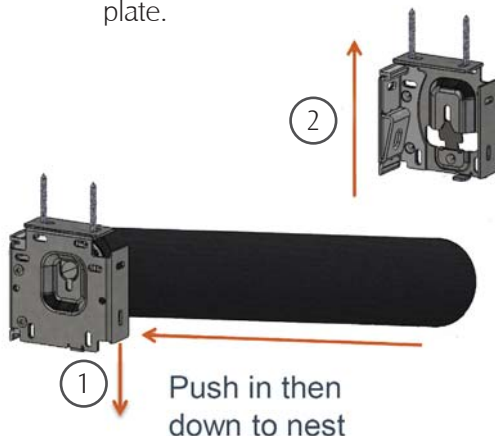
#### ► Step 6d. Mount right and left fascia brackets.

Note: If adequate structure is not present in mounting area, appropriate expansion anchors or toggle bolts should be used.



#### ► Step 6e. Insert roller blind into fascia brackets.

- 1) Insert Roller blind into the Fascia bracket keyhole that does not have the locking plate. For Standard roll, this is the LEFT bracket, for Reverse roll, this is the RIGHT bracket.
- 2) Once secured on one side, lift the roller blind up into the other Fascia bracket (containing the locking plate). The spring loaded locking plate will snap as the spindle moves past it and locks the blind into position. Ensure the blind is level within the brackets and the spindle is sitting hard against the locking plate.

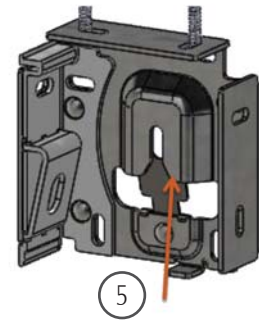
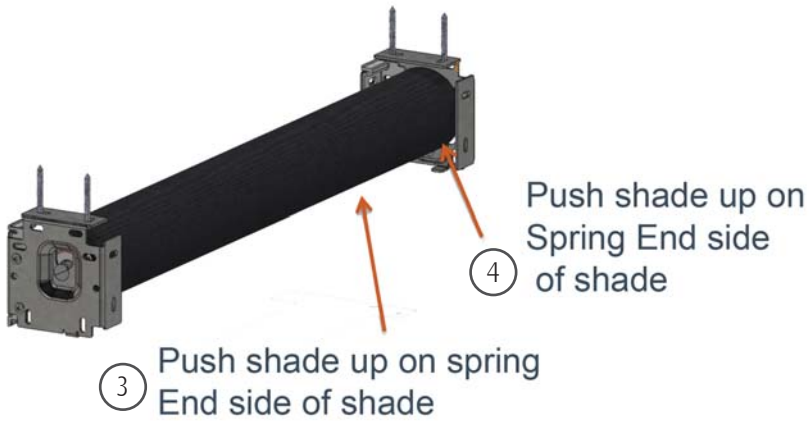




---

► **Step 6f. To remove roller shade.**

3. Push blind up on the "spring clip" end of the shade.
4. Insert screw driver to flex "spring clip" while pushing shade up.
5. With blind pushed up and spring clip flexed out of the way, pull shade down to release bracket from spring clip.



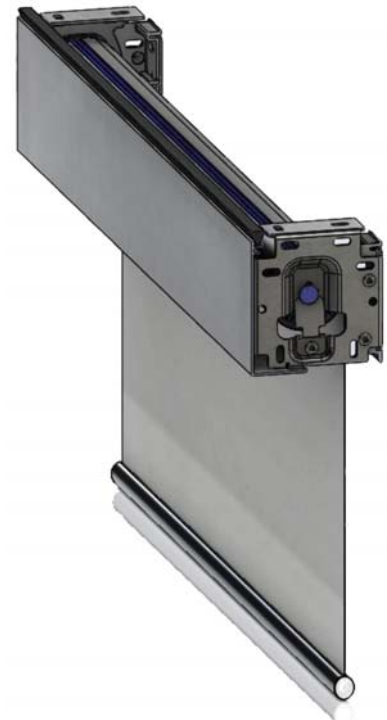
View of location for screw Driver to flex spring clip for Shade removal

---

► **Step 6g. Reveal mounted Fascia**

For Reveal mounted Fascia, side caps are not provided.

Clip the Fascia panel into position at the top of the bracket and snap the bottom down into the locator clip at the bottom of the bracket.



---

► **Step 6h. Face mounted Fascia.**

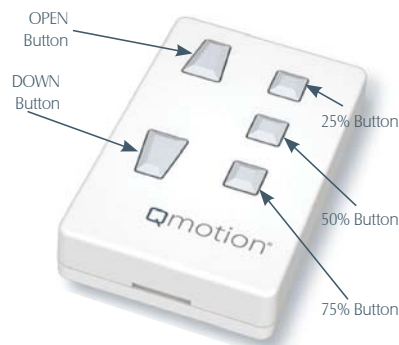
- For face mounted Fascia, side caps will be included.
- Clip the Fascia panel into position at the top of the bracket and snap the bottom down into the locator clip at the bottom of the bracket.
- Once secured, clip the fascia end caps on to each side.  
(ensure the correct left and right caps are used)



## 7 FINISHING INSTALLATION

### ► Step 7a.

There are 2 versions of the Qmotion Software - your blind will have either software A or B. Identify your version by performing the test below, and then follow the relevant section for specific programming instructions. Pair a Remote Control to the blind first (instructions are universal for Software Version A and B).



### ► Step 7b. Pair Remote Control

**The Qmotion Blind has been placed into a special 'Transport mode'.**

- To pair the remote control, simply pull down on the bottom bar more than 50mm to enter Pairing Mode, then Press and HOLD the UP button on the remote control to be paired, The blind will roll UP to indicate successful pairing.
- If using a Multichannel remote, ensure you select the correct channel first.
- If the pairing does not occur, follow the instructions below. (Remove battery method)

### ► Step 7c. Remove Battery Method

Gently pull down on the bottom bar to expose the battery cut-out on the blind tube. Place a hand firmly on the blind tube to stop the blind automatically retracting. The blind will hesitate, and then stall, allowing you to gain access to the battery insert. Remove the Battery cover (if installed).

**Remove One Battery And Reinsert The Battery.**

The blind is now in Pairing Mode for 1 minute.

Press and HOLD the UP button on the remote control for 8 seconds, or if using the multichannel remote, select the required channel number first then press and HOLD the UP button for 8 seconds. The blind will retract to signal the remote control is paired.

### ► Step 7d. Set Bottom Limit

- Press the DOWN button on the remote to send the blind to the default bottom limit.
- Press and HOLD the DOWN button for 8 seconds. The blind will "jog" up and down.
- Pull down on the bottom bar to move the blind to the required bottom limit.
- Press and HOLD the DOWN button for 8 seconds. The blind will retract to the full open position and the bottom limit will be set.

### ► Step 7e. Intermediate Stops

The three intermediate stops will be automatically set, once the bottom limit is set.

### ► Step 7f. Test For Software Version A Or B

- Press the UP Button on the Remote Control to ensure the blind is in the full UP position.
- Press and HOLD the UP button on the Remote Control.
- If the blind moves down approximately 30cm or more then hesitates and moves UP – VERSION A
- If the blind moves down approximately 10cm and then hesitates and moves UP – VERSION B
- Once you have determined your Software Version, press UP to place the blind back in the full UP position.

### ► Step 7g-1. Software Version A

#### **Add Additional Remote Control to Blind**

- On the first remote control already paired to the blind, press the UP button to send the blind to the full open position. Press and HOLD the UP button for 10 seconds.
- Blind will move to the 75% closed position.
- Pull down on the bottom bar more than 50mm.
- Press and HOLD the UP button on the new remote control to be paired for 8 seconds. Blind will move to the full open position and the second remote control is now paired.

#### **Remove Blind from Remote Control**

- On the first remote control already paired to the blind, press the UP button to send the blind to the full open position. Press and HOLD the UP button for 10 seconds.
- Blind will move to the 75% closed position.
- Pull down on the bottom bar more than 50mm.
- Press and HOLD the DOWN button on the new remote control to be paired for 8 seconds. Blind will move to the full open position and is now removed from the remote control.

#### **Reset Blind – Clears Limits and**

##### **Remote Control Pairing**

- Press the UP button to send the blind to the full open position.
- Press and HOLD the UP button. Continue to hold the UP button on the remote control until the blind goes down and then changes direction and begins moving up.
- When the blind begins moving UP, release the UP button. The blind will return to the 25% closed position.
- Within 15 seconds, pull down on the bottom bar by more than 50mm.
- The blind bottom limit is now reset and any remote control pairing is deleted.
- The blind will remain in pairing mode for up to 1 minute. To re-pair the remote control, press and HOLD the UP button for 8 seconds.

### ► Step 7g-2. Software Version B

#### **Add Additional Remote Control to Blind**

- On the first remote control already paired to the blind, press the UP button to send the blind to the full open position. Press and HOLD the UP button for 10 seconds.
- The Blind will move down approximately 10cm then Back UP. Keep holding the UP Button.
- Blind will now move to the 75% closed position, release the UP button as the blind is travelling towards the 75% closed position. When the blind has stopped moving, pull DOWN on the bottom bar more than 50mm.
- Press and HOLD the UP button on the new remote control to be paired for 8 seconds. Blind will move to the full open position and the second remote control is now paired.

#### **Remove Blind from Remote Control**

- On the remote control that you wish to remove the blind from, press the UP button to send the blind to the full open position. Press and HOLD the UP button for 10 seconds.
- The Blind will move down approximately 10cm then Back UP. Keep holding the UP Button.
- Blind will now move to the 75% closed position, Release the UP button as the blind is travelling towards the 75% closed position. When the blind has stopped moving, pull DOWN on the bottom bar more than 50mm.
- Press and HOLD the DOWN button on the remote control for 8 seconds. Blind will move to the full open position and will now be removed from the Remote Control.

#### **Reset Blind – Clears Limits and Remote**

##### **Control Pairing**

- Press the UP button to send the blind to the full open position. Press and HOLD the UP button.
- The blind will move down approximately 10cm then Back UP. Keep holding the UP Button. Blind will now move to the 75% closed position. Keep holding the UP Button.
- The Blind will PAUSE at the 75% position and then begin moving in the Opposite direction. When the shade has started moving in the opposite direction from 75%, release the UP button.
- When the blind has stopped moving, pull DOWN on the bottom bar more than 50mm.
- The blind bottom limit is now reset and any remote control pairing is deleted.
- The blind will remain in pairing mode for up to 1 minute. To re-pair the remote control, press and HOLD the UP button for 8 seconds.

### ► Step 7h. Software Version A or B Customise the position of 25% / 50% / 75% buttons.

It is possible to custom change any of the intermediate stops. This is useful if you need to align multiple blinds with varying drops to the same intermediate position.

To change the 25% button, follow the instructions below. You can substitute the 25% button in the instructions below for any of the other intermediate buttons.

- Press the 25% button to send the shade to 25%.
  - Press and HOLD the 25% button. When the blind begins to move, release the button.
  - Within 10 seconds, pull down on the bottom bar of the blind more than 50mm.
  - Move the blind to the NEW 25% position by pulling down on the bottom bar or by rolling up the blind by hand to the correct position.
  - Press and HOLD the 25% button until the blind starts to move.
  - The blind will roll all the way up and the new custom position has been changed.
- 

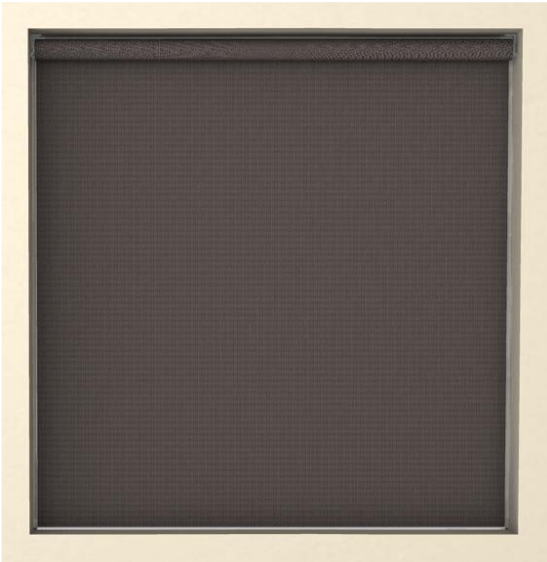
### ► Step 7i. Software Version B Only Set a Custom TOP Limit.

It is possible to set a custom top limit on the blind. Although the blind will return to this location each time, a hard set to the bumpers is required every 50 operations (this happens automatically)

- Press the UP button once to send the blind to the full open position.
- Press and HOLD the UP button.
- The blind will move down approximately 10cm then Back UP.
- Immediately release the UP button after you see the blind JOG up/down.
- Within 10 seconds, Pull DOWN on the bottom bar more than 50mm.
- Move the blind to the NEW TOP LIMIT position by pulling down on the bottom bar or by rolling up the blind by hand to the desired UP Limit position.
- Press and HOLD the UP button until the blind starts moving.
- The blind will now retract all the way up to the hard stop, then return to the new TOP Limit position.

### ► Step 7j. Test Blind Operation

- Press the DOWN button to move the blind to the Down position.
- While down, ensure that the blind appears straight, level, and that the gaps or overlaps are equal.
- Safely make adjustments to the brackets as needed.
- When satisfied, complete installation by adding one more Screw to each Blind Bracket.



### ► Step 7k. Install Wall Station

#### Step 1

Determine a convenient location for your Remote Control Wall Station. This is typically near an entrance to a room but can be placed anywhere in a room.

#### Step 2

Hold the Remote Control Wall Station in the desired location and use a level to ensure it is straight and/or level with other nearby wallplates. Mark holes with a pencil.

#### Step 3

Use the included screws and anchors to fasten the wall station to the wall. Your Remote Control will stick to the wall station with a built-in magnet.



## 8 CHANGING THE BATTERIES

### ► Step 8a.

Move the blind to the Down position. If the blind batteries are completely depleted, you may skip to step 3.



### ► Step 8b.

Pull the blind past the Down position. The blind will then move to the 75% position.



### ► Step 8c.

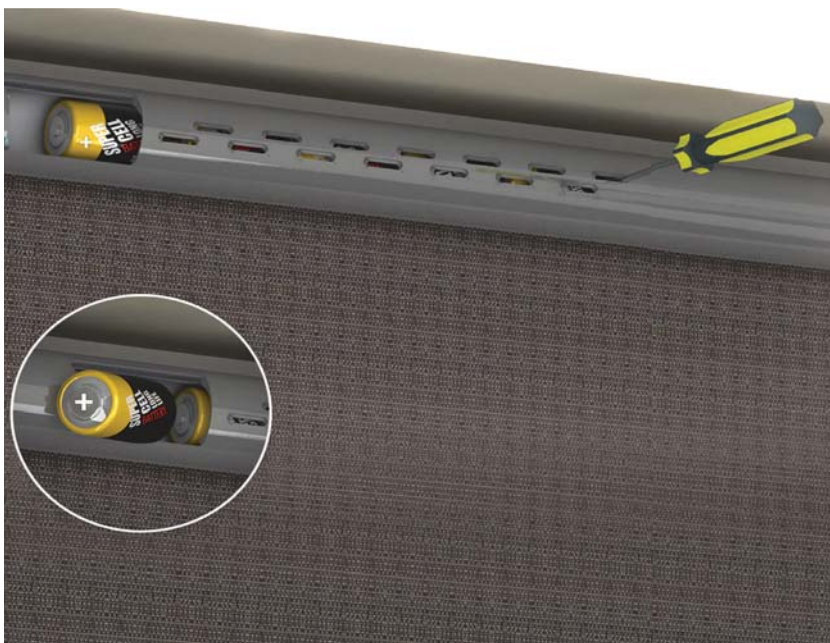
Carefully pull the blind downward in one continuous motion until the battery window is exposed.

Some models may include a battery cover. Remove the cover to expose battery access.



### ► Step 8d.

Replace all batteries with fresh D-Cell batteries. Orient all batteries with the positive end as shown.



### ► Step 8e.

Press any button. The blind moves to the Open position. The blind will now resume normal operation.



## 9 CHANGING BATTERIES QMOTION SMALL

- ▶ **Step 9a.**  
Follow steps, 8a, 8b & 8C.  
Remove Battery pack from motor

- ▶ **Step 9b.**  
Replace all three batteries  
with fresh AA-cell batteries.

- ▶ **Step 9c.**  
Insert battery pack back  
into motor.  
Orient battery pack with  
the positive end as shown



Follow step 8e

## 10 QMOTION HARDWIRE INSTALLATION INSTRUCTIONS

- ▶ **Step 10a.**  
With power-pack unplugged from  
mains power, cut barrel end off.



- ▶ **Step 10b.**  
Strip the jacket/outer layer using  
the appropriate wire strippers.



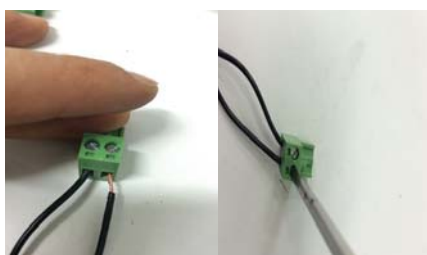
- ▶ **Step 10c.**  
Unplug green connector on motor tail  
end.



- ▶ **Step 10d.**  
Unscrew both screws on  
connector with a flathead screw  
driver.



- ▶ **Step 10e.**  
Insert wires into connector and  
tighten screws up.  
Note: Polarity is not important.



- ▶ **Step 10f.**  
Plug connector back onto the motor tail  
end.



- ▶ **Step 10g.**  
Plug power pack into mains  
power.

- ▶ **Step 10h.**  
Pull bottom bar more than 50mm to  
enter pairing mode, then press and  
hold the Up button on the remote. The  
blind will begin to roll up, release the  
Up button  
(If using a Multichannel remote, ensure  
you select the correct channel first).  
Note: If pairing doesn't work the first time,  
disconnect power to the blind, repower and  
pair.

- ▶ **Step 10i.**  
Follow the standard Qmotion process for  
setting bottom limit, factory reset, etc.

## 11 QMOTION DUAL BRACKET

---

### ► Step 11a.

It is likely that the thinner of the two blinds (Sunscreen) may pull through the bumpers, due to the thicker fabric (Blockout) requiring the larger bracket.



### ► Step 11b.

If this happens, the solution is to pull forward the rubber bump, stop a few mm so that it can make contact and stop the bottom bar. You may need to perform this a few times to get the rubber bump stop in the correct position.



## 12 QCONNECT

---

QConnect is a device that integrates Qmotion Blinds with a third party automation system. This is done through an RS232 or RS485 connection or a dry contact connection with an external control system such as a PC or automation system. Integration of the QConnect requires custom programming by an integrator from the third party control system.

An Integrator is a person who programs/sets up automation systems.

The Integrator will need to download a program called 'Q Connect tester' ([http://www.qmotionshades.com/system/files/Applications/QConnect\\_Tester.zip](http://www.qmotionshades.com/system/files/Applications/QConnect_Tester.zip)).

### **The QConnect has two modes of operation.**

Battery mode and an always powered mode (via supplied adapter, or optional serial power).

This short guide will focus on connecting via RS232 as this is the most common way of communication to a third party automation system. If connecting via RS485 or Dry Contact, refer to the 'Operating Guide'.

### **Connecting Antenna**

To use QConnect, it is necessary to attach the supplied swivel antenna. To attach the antenna, carefully align the antenna connector with the antenna base and screw the antenna on in a clockwise direction. Do not over tighten the antenna.

### **Rotary Selector**

The QConnect Rotary Selector is used for two functions.

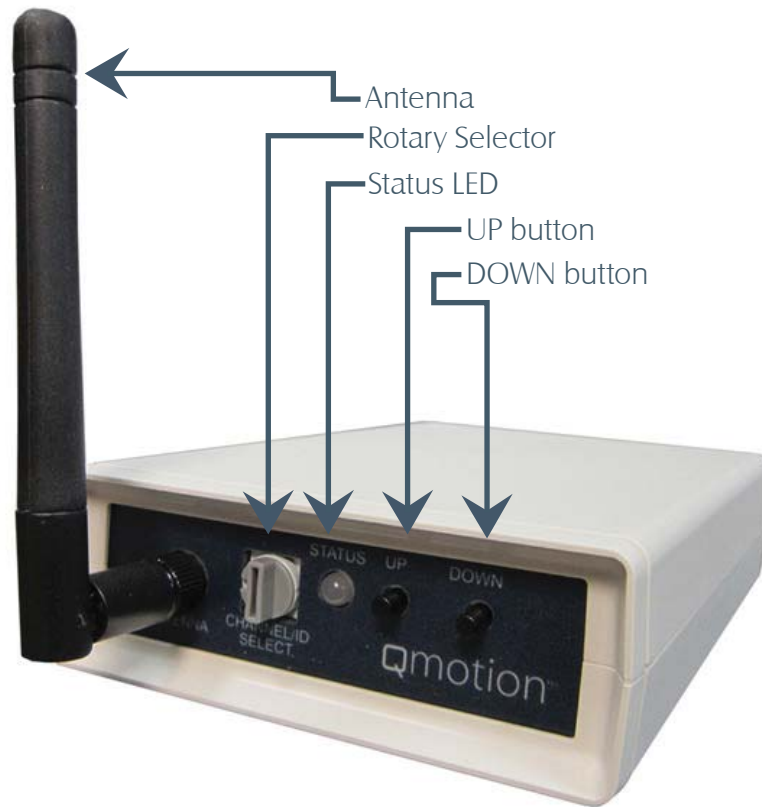
When external power is absent from the QConnect, the Rotary selector is used to pick one of 15 unique groups (or addresses) to lean to each Qmotion Blind.

This needs to be performed before handing over to the Integrator (person programming/setting up the automation system).

A single blind or multiple blinds can be paired with each group.  
For pairing/learning the QConnect to a blind, please see 'Battery mode'.

When external power is connected to the QConnect, it is now ready to be handed over to the Integrator (person programming/setting up the automation system)





### Battery Mode, Pairing/Learning

The battery mode of the QConnect is used to allow portability of the device without needing cables. This mode is useful for setting up new blinds and groupings of blinds. The QConnect has two push buttons, UP and DOWN. These buttons are used for learning new blinds and for testing blinds locally. These buttons are not functional when the QConnect is externally powered. The internal battery of the QConnect should last several years if used as intended for the training and testing of new blinds. The serial interfaces and the dry contact interface are not functional in battery mode.

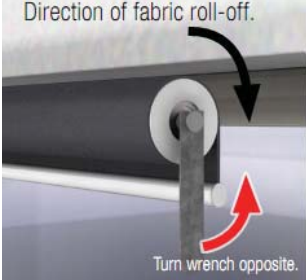
While on battery power the QConnect functions as a standard remote with an up button and a down button. Battery powered operation is intended to be used to learn the QConnect to your installed QMotion Blinds.


### To learn the QConnect to your QMotion Blinds:

- a) Unplug the QConnect from the power supply and bring it to the blind you would like to control with the QConnect.
- b) Using the Rotary Switch, set the QConnect to the appropriate channel you would like to control the blind (1- F).
- c) Using a remote that is already learned to the blind, press the up button and wait for the blind to move to the open position (blind is rolled up).
- d) After the blind stops at the top, press and hold the Up button until the blind begins to move down (hold for roughly 5 seconds) and release the button. The blind should stop at the 75% closed position.
- e) Manually tug the blind.
- f) Now press and hold the up button on the QConnect until the blind moves to the fully open position. Your QConnect is now learned to the blind on the channel designated by the rotary switch.

Refer to Qconnect 'Operation Guide' for full instructions and other Interface connections.

# 13 TROUBLESHOOTING

Symptom	Problem	Solution
When blind is in the UP position, fabric hangs over one end of the blind and may interfere with brackets	Telescoping fabric.	Identify the direction of the overhang. Follow steps of the battery changing procedure to expose the blind tube. Apply a piece of masking tape horizontally on the blind tube on the side where fabric overhangs tube. Press any button on the remote. Verify if the telescoping has been corrected and repeat this process as needed.
When the blind rolls to the full UP position, it slowly sags down about 100mm.	Prewind is required on the spring (Refer to Qmotion Prewinding Instruction Guide).	 <p>Determine spring end of blind. Standard Roll blind's spring is on the blind's right end. Reverse Roll blind's spring is on the blind's left end.</p> <ul style="list-style-type: none"> <li>Remove the spring end from its mounting bracket. To prevent damage to the motor end bracket, do not move spring end more than 100mm from bracket.</li> <li>Place the prewind wrench (Part Number: 34.445.000) on the spindle as shown. Give one full rotation in the direction opposite of fabric roll-off. Do not over-wind the spring.</li> <li>Do not release the wrench until the spindle is seated securely in the mounting bracket.</li> <li>While holding spindle with the wrench, return the blind to its mounting bracket.</li> <li>When the spindle is fully seated in mounting bracket, remove prewind wrench.</li> <li>Any prewinds on the spring will unwind when the spindle is removed from the bracket.</li> </ul>
Blind is moving faster in one direction.	Spring miscalculation or spring assembly may have become dislodged during transit.	A Qmotion Blind should travel at similar speeds in either direction. Eg. Time the operation of the blind from fully OPEN to fully CLOSED. Now compare this time for fully CLOSED to fully OPEN. If there is a significant difference in the timing (more than 4 seconds), it may indicate a Spring miscalculation or faulty spring. Contact the Technical Helpdesk for further advice. Do not attempt to remove the spring assembly from the blind.
Blind is unresponsive to a specific button.	Stuck in Learn Mode.	Wait 5 minutes for the blind to automatically exit Learn Mode. If the blind still does not respond, follow instructions to change batteries, remove and reinsert one battery, then try again.

Symptom	Problem	Solution
After replacing batteries, blind is not responding to remote.	Not responsive after battery change	<p>Firstly make sure that the positive end of the battery is positioned correctly.(refer to step 8d). If this does not resolve the issue ,try the following procedure.</p> <ul style="list-style-type: none"> <li>- Make sure batteries are in the motor</li> <li>- Roll the blind up at least 30cm manually by hand</li> <li>- Pull bottom bar down more than 300mm, this will 'wake the motor'</li> <li>- Press and hold the UP button until the blind starts to roll up, then release the Up button.</li> </ul> <p>If blind is still not responding, try the bellow 'paperclip method'.</p>
Blind will not pair to remote control even after a battery has been removed and replaced.	Blind may be stuck in Transport Sleep Mode.	 <p>It may be necessary to wake the motor manually. Remove one battery from the blind (follow battery removal instructions). Use a paperclip or piece of wire bent into a 'U' shape to make contact between the two metal contacts on the left of where the first battery is inserted. (see image left). Now re-insert the battery and roll the blind up about 300mm by hand. Now follow pairing instructions to pair the remote control to the blind.</p>
When I press UP on the remote, the blind goes all the way down to the floor.	There may be a top limit set at the bottom of the blind.	<p>It is possible to set a top limit on the blind. The top limit may have been inadvertently set at the bottom of the blind. Follow the instructions on the Programming page to set a Customer Top Limit and move the top limit to about 50% open. Now you can perform a full reset as per the reset instructions. This will clear out any top limits and enable the blind to be factory reset. Ensure the remote control is re-paired and the bottom limit is set after a full reset.</p>

## 14 CARE AND CLEANING

### Care and Cleaning

1. Surface dust may be removed with a gentle brush, feather duster or clean, dry cloth.
2. Wipe with a dry sponge.
3. An art gum rubber is excellent for removing small marks.

#### Note:

This instruction pamphlet is a guide to the installation, use and maintenance of the Roller Blinds and Internal Sunscreens as supplied by Hunter Douglas Limited ('HDL') and HDL does not warrant the accuracy of the information contained in this pamphlet. The installer must rely upon their own skill and expertise.

This pamphlet is based on general data pertaining to the construction, material properties and working methods known to us at the time of issue and is therefore subject to changes or amendments at any time without notice and the right to change or amend is hereby expressly reserved by HDL.



©Copyright 2014 Hunter Douglas Limited [ABN 98 009 675 709]  
18.012.047 11/14