

Sonesse 30 WF Li-ion RTS

Programming the Motor

Note: Ensure the motor has been fully charged and the RTS receiver has been activated prior to installation.

To check the motor charge status, connect to the charger. The Charger LED will illuminate the following:

Solid Red - Charging

Solid Orange - Charging near completion

Solid Green - Charging is complete

1. WAKE THE MOTOR UP

When using a multi-channel RTS control, remember to select the desired channel prior to programming



Hold the UP & DOWN buttons on the remote together until the motor jogs up & down

- If the motor doesn't jog, move to step 2
- If the motor jogs, move to step 3



2. RESET MOTOR

There are two possible ways to reset the motor which will depend on the motor the customer has:

1. **Motor Option 1: 2 x cables protruding from motor head** - Press & hold the program button on the motor head until you get 3 jogs



2. **Motor Option 2: 1 x cable protruding from motor head** - Using the cable protruding, insert this into the hole between the charging port & antenna until you get 3 jogs



3. CHECK MOTOR DIRECTION OF ROTATION

Press & hold the DOWN button. Does the Roller Blind move downwards?

- **YES** - The Roller Blind moves downwards while pressing down - Go to step 5
- **NO** - The Roller Blind moves towards the up position while pressing down - Continue to step 4

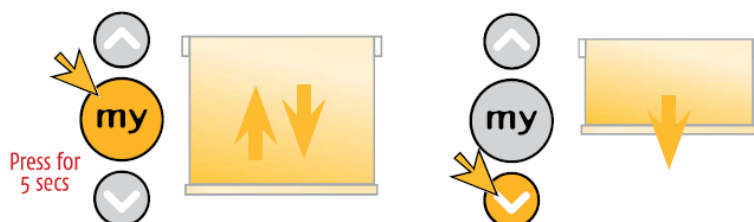


4. CHANGE THE DIRECTION OF THE MOTOR

To change the direction of the motor, press & hold the MY button until the Blind Jogs

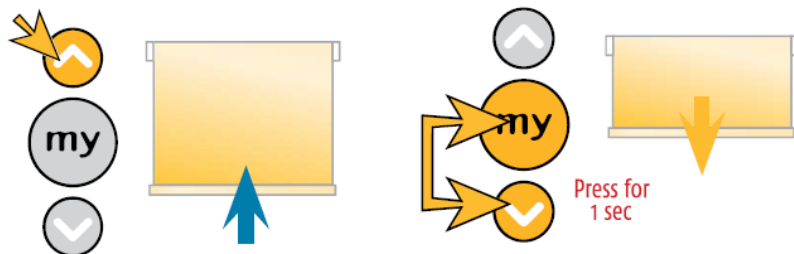
Press the DOWN button to ensure the motor direction has been corrected

NOTE: If you do not complete this step at this point, you will need to FACTORY RESET the motor



5. SET TOP LIMIT

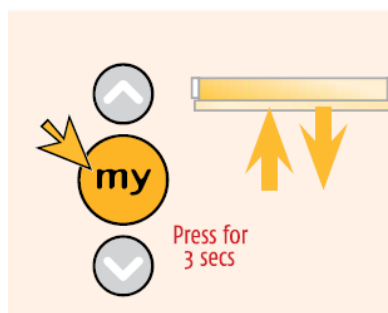
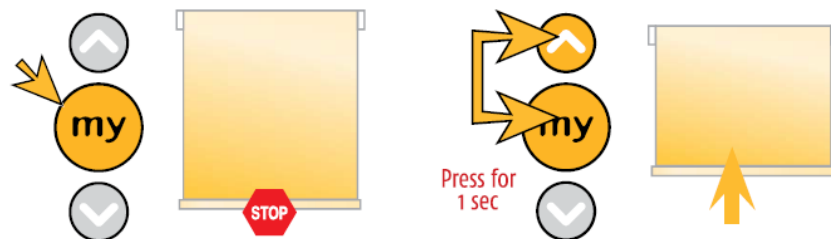
Using the UP button, move the blind to the top limit. Once at the top limit, briefly press the MY & DOWN button until the blind moves to the bottom limit



6. SET BOTTOM LIMIT

Press MY button to stop the motor at your desired bottom limit. Once at the preferred bottom limit, briefly press the MY & UP button until the blind moves to the top limit

NOTE: Do not stop the blind; allow it to move to the top limit until the motor stops on its own



7. SAVING THE PROGRAMMING TO THE RTS REMOTE

Flip the remote control over. Using a screw, pen or anything small enough, press the program button on the back of the remote control for less than 0.5 of a second; similar to a quick prick

The motor will jog to confirm the motor limits have been saved

NOTE: Do not press and hold the program button on the remote. This should be completed similar to a quick tap

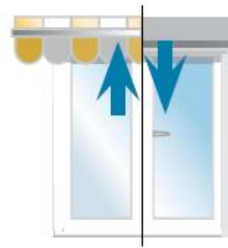


Smoove RTS

OR

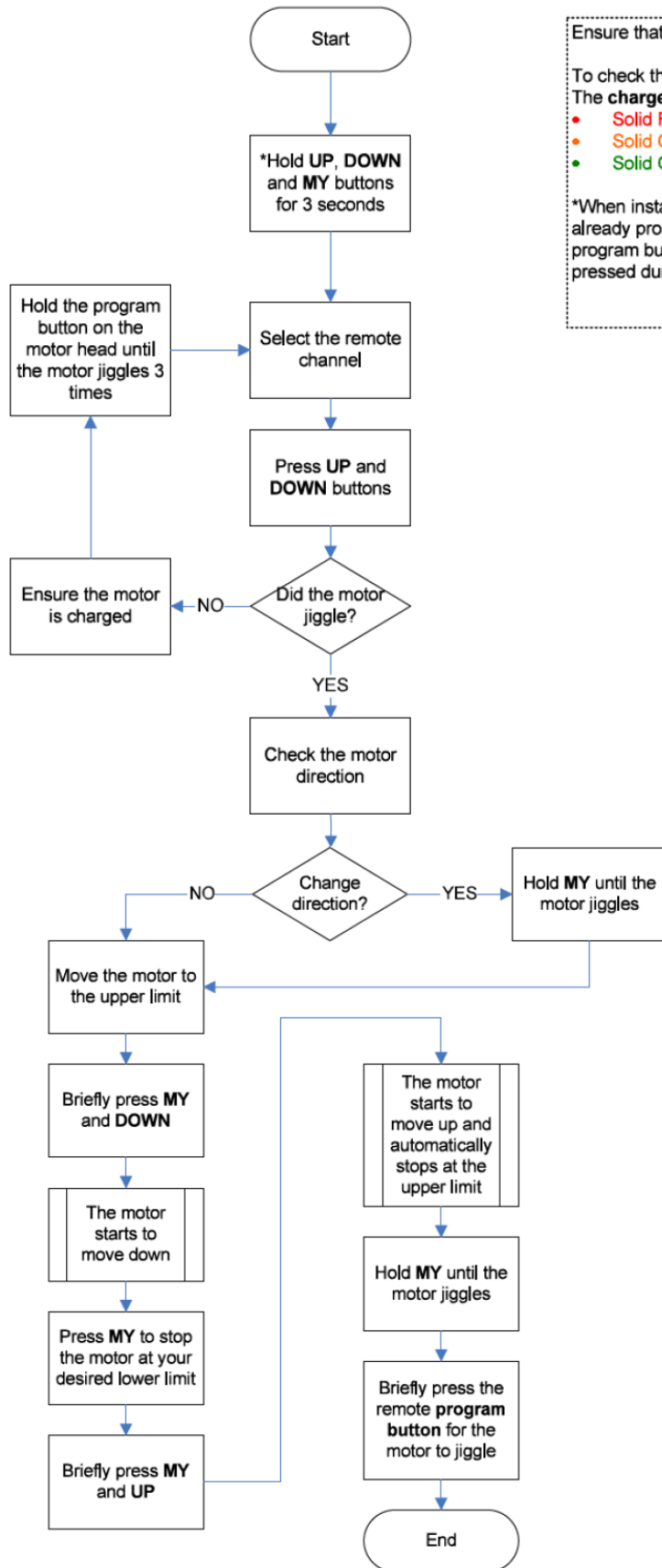


Situo RTS



jiggle = control recorded ✓

FLOWCHART FOR PROGRAMMING THE MOTOR



Ensure that the motor is fully charged prior to installation

To check the motor charge status, connect the charger. The **charger LED** will illuminate the following:

- Solid Red – Charging
- Solid Orange – Charging near completion
- Solid Green – Charging is complete

*When installing multiple motors, ensures that motors not already programmed are deactivated. For example, the program button on the motor head is accidentally pressed during the installation of blinds.