

RTS Motor Hardwired Programming

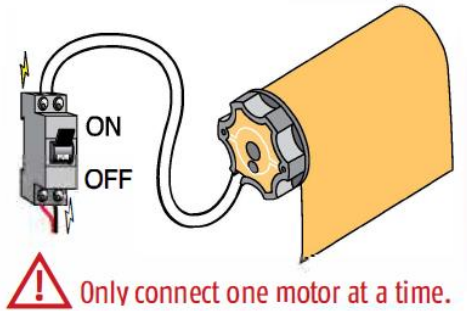
1. Select Channel

If you are using a multi-channel remote, select the required channel. The channel must be selected prior to programming.

2. Identify the Correct Motor

In order to identify which mode the motor is in, make sure that you pay attention to whether the product performs a jog up & down when power is applied.

Switch on the power to the motor.



3. Motor Mode

Did the product perform a jog?

YES - Go to Step 4

No - Go to Step 5

4. Yes - Jiggle

This means limits have already been set. Press and hold simultaneously the Up and Down button. The product should jiggle.

After the motor jogs, proceed to step 10

5. No - No Jog Present

Press and hold simultaneously the Up and Down button. The product should jog.

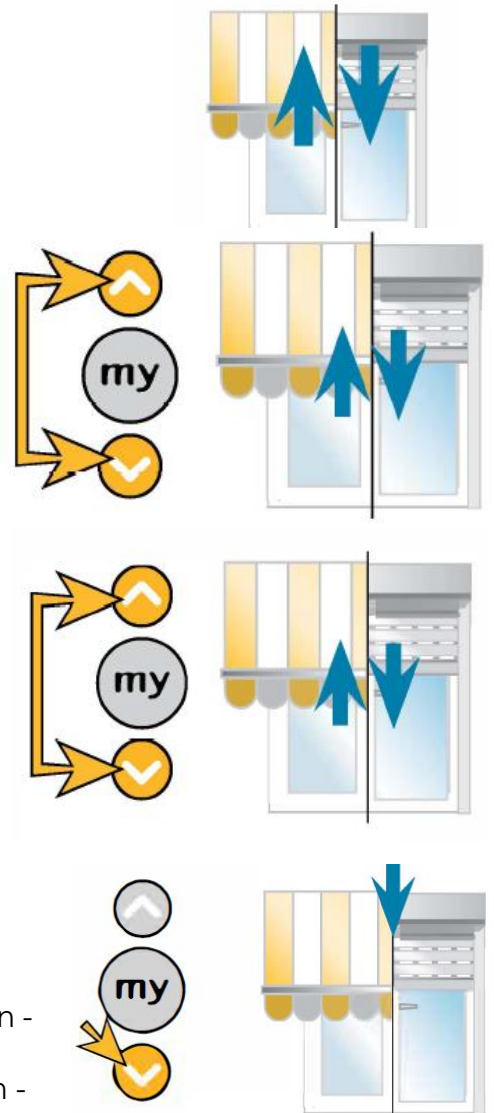
After the motor jogs, continue to step 6.

6. Check the Correct Direction of Rotation

Press & hold the down button. Does the product move towards the bottom limit?

YES - The product extends while pressing the down button - Go to step 8

NO - The product retracts while pressing the down button - Continue to step 7

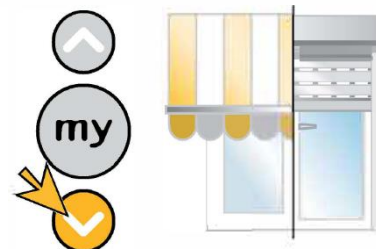


7. Reverse the Direction of the Rotation

To reverse the direction of the motor, press and hold the MY button until the product jogs.

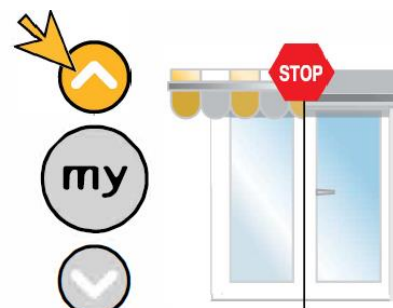


Press and hold the Down button to test that the motor direction is correct. Continue to step 8

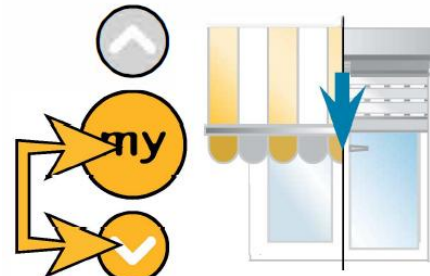


8. Record the Top Limit

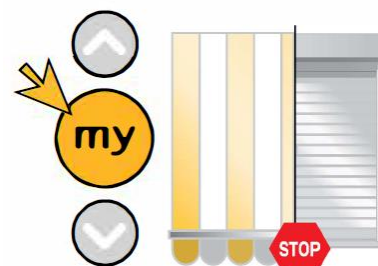
Use the Up button to operate the product until it reaches the desired Up limit position.



Press and hold the my and Down buttons until the product starts to extend/lower.



Stop the product at the desired limit position (adjust with Up or Down if required)



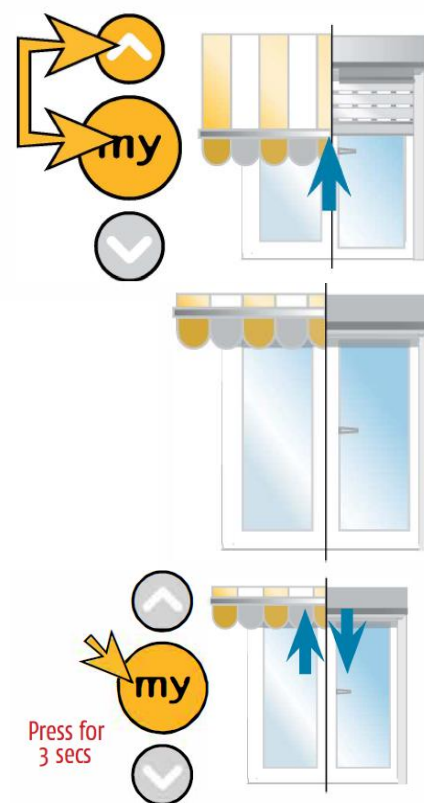
9. Record the Bottom Limit Position

Press and hold the MY and Up button until the product starts to retract/raise.

The product will automatically close and stop.

Press and hold the MY button until the product jiggles to confirm the limit settings.

The Limit has been Recorded



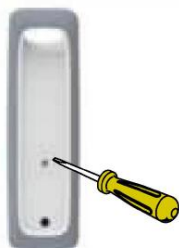
10. Programming the RTS Control to the Motor

Press the program button on the RTS control until the product jogs.

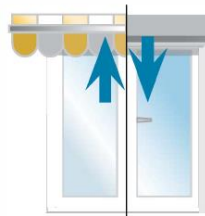


Smoove RTS

OR



Situo RTS

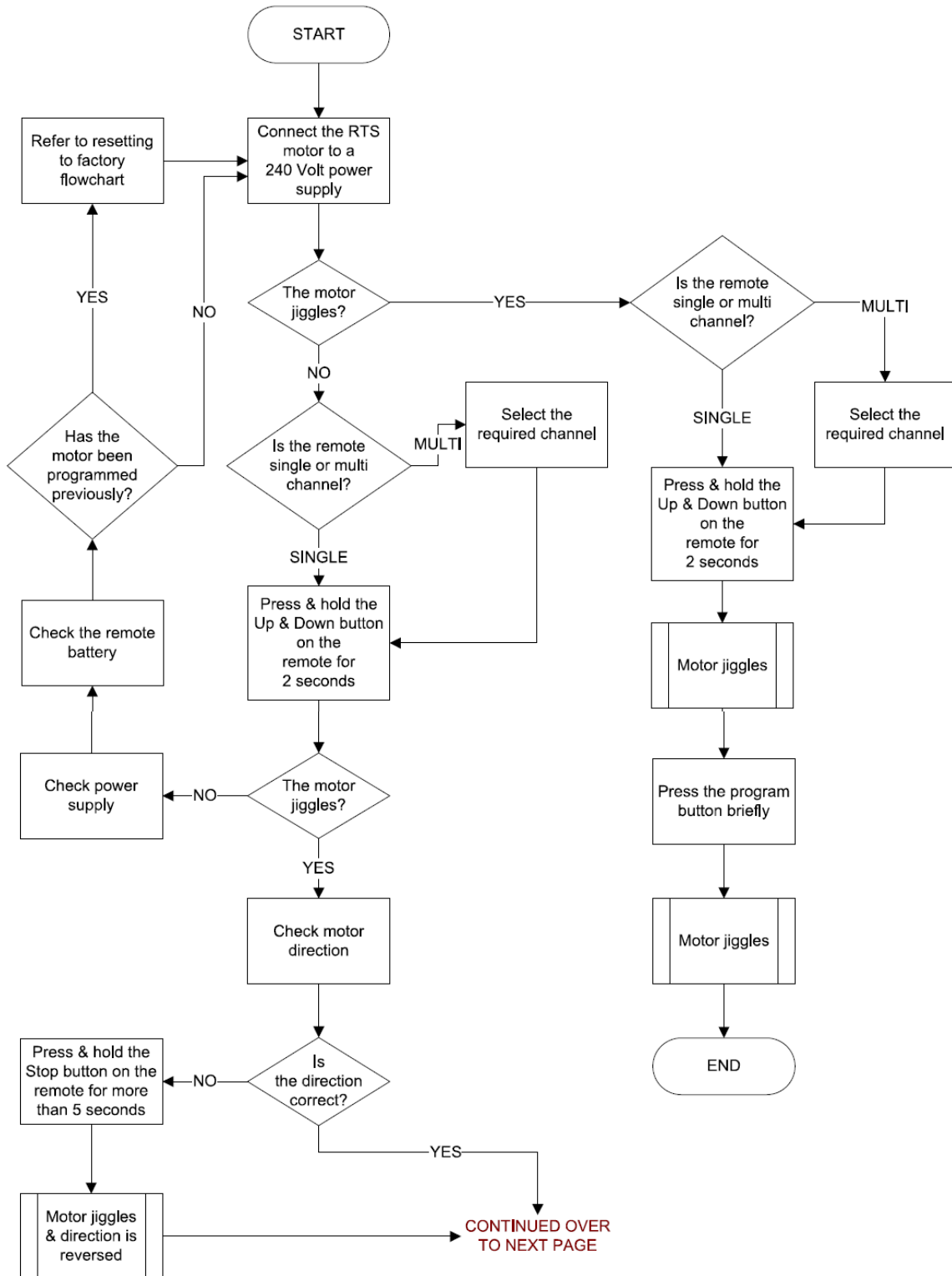


jiggle = control recorded

Check functionality
Complete



Flowchart for Programming



FROM PREVIOUS
PAGE

