

## RTS Motor Hardwired

### Erasing the Memory of the Motor (Factory Reset)

**Note:** All remotes, including the remote used to finalise programming will be deleted along with all sensors and recorded limits that have been programmed.

#### Perform a Double Power Cut with Time Delays

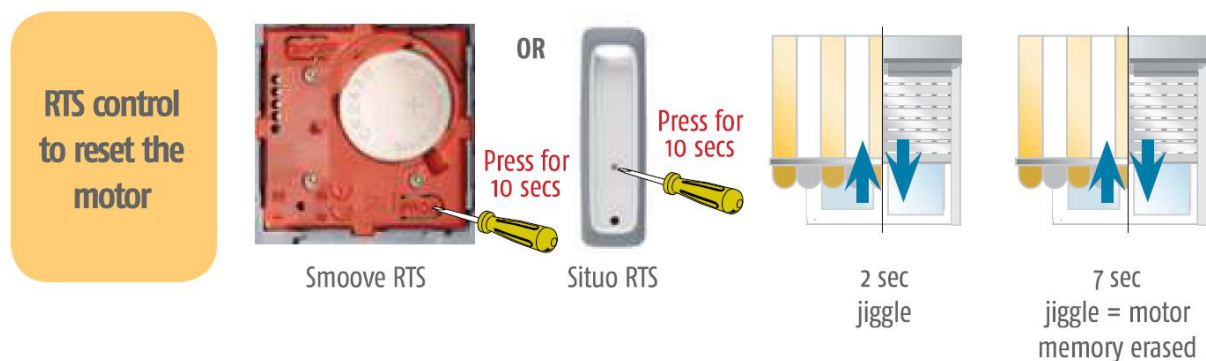
Complete a 2 - 10 - 2 process.

Start with the power On then complete the following steps:

1. **TURN POWER OFF** for 2 seconds
2. **TURN POWER ON** for 10 seconds
3. **TURN POWER OFF** for 2 seconds
4. **TURN POWER ON**

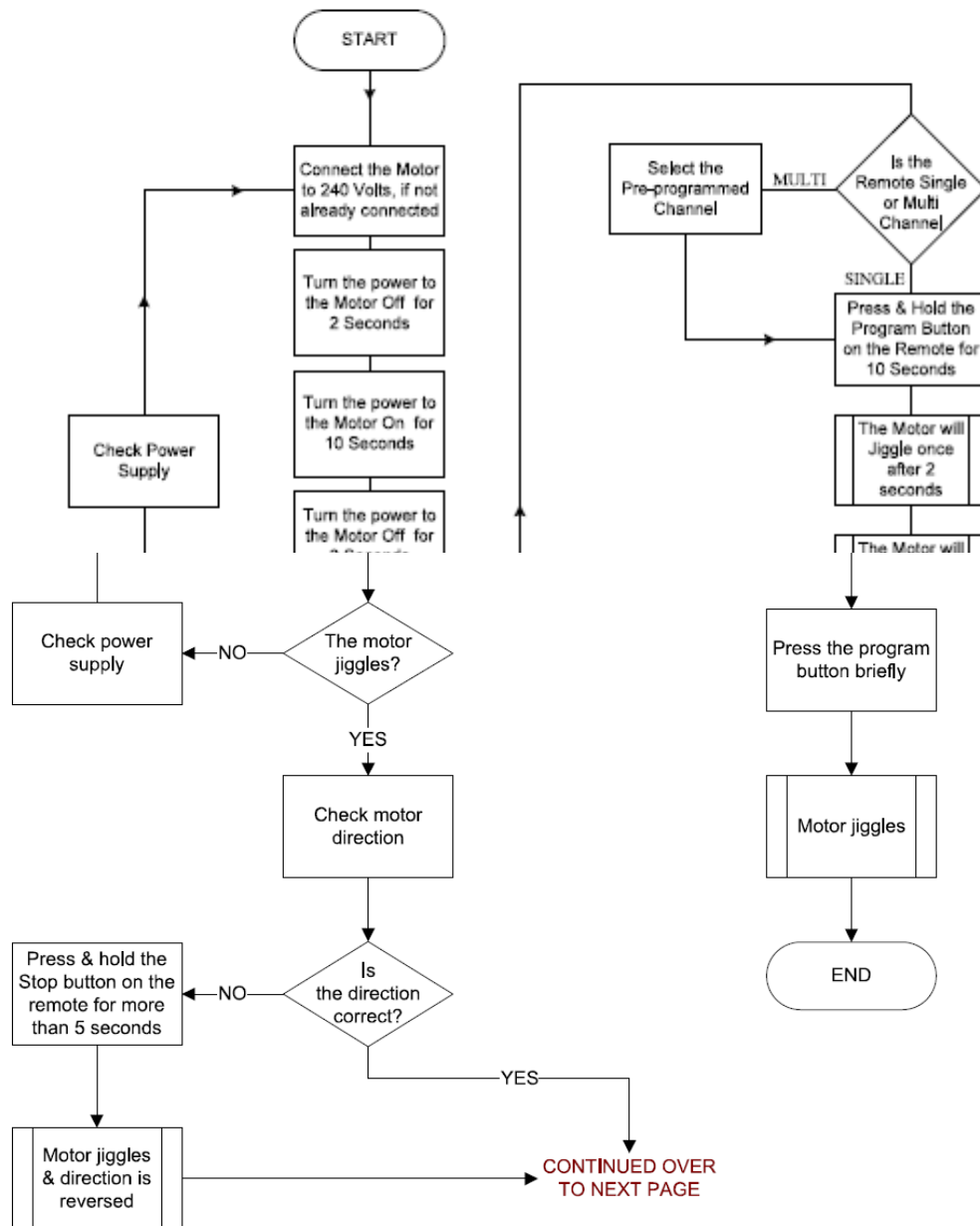
The product will move up or down. If the product does not move, then you may need to leave the product for 5 - 10 mins and try again

#### Complete Factory Reset with Remote Control



# Flowchart for Erasing the Motor (Factory Reset)

**IMPORTANT NOTE:**  
 This procedure is useful if the existing limits cannot be accessed for adjustment or if a clean start is required. The following will work with any remote.



FROM PREVIOUS PAGE

