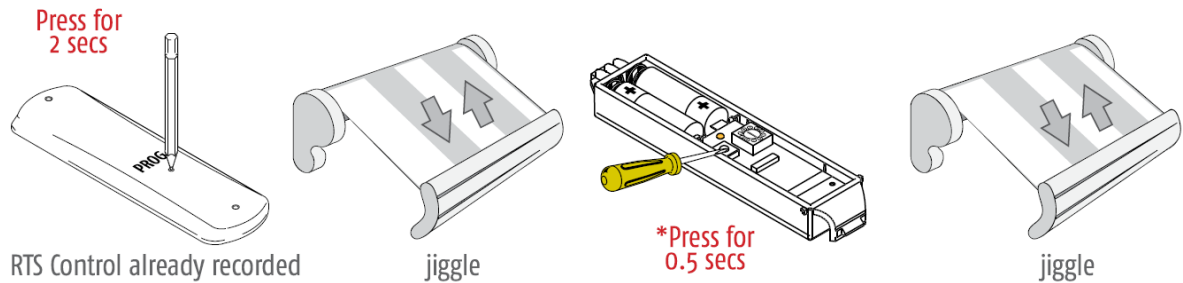


# Somfy Automation

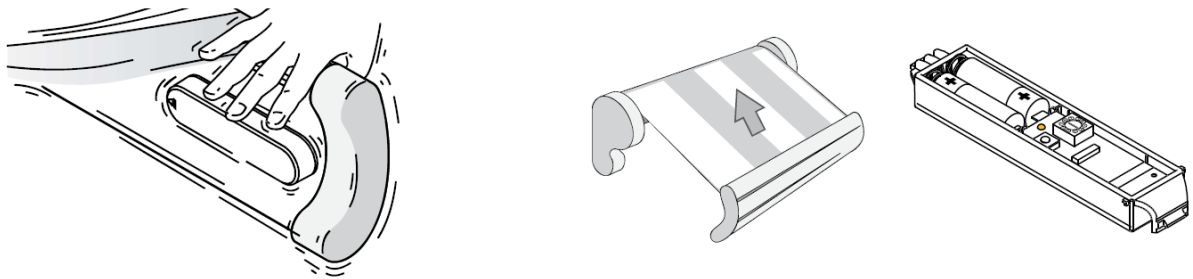
## Deleting Eolis 3D RTS Sensor

### Deleting the Sensor into the Motor Memory



\*Keep pressing for two jiggles if you wish to delete all sensors.

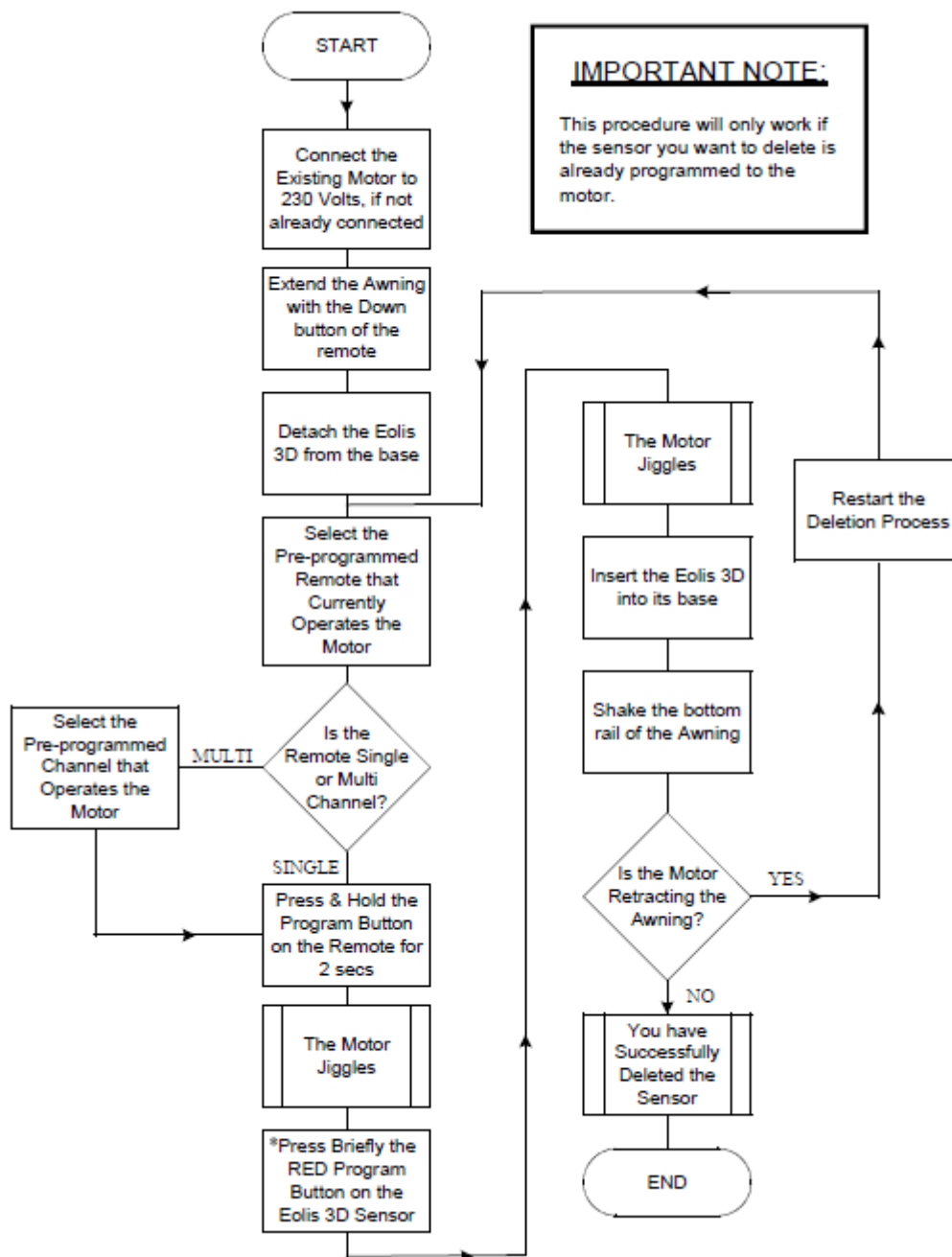
### Test the Sensor



Test the sensor functionality by shaking the awning.  
The awning shouldn't retract if the sensor has been deleted correctly.

**Somfy Tip:** If installation is incorrect or the batteries are low, the awning will retract every 15 to 30 minutes.

## Flowchart for Sensor Deletion



**Note:** Keep pressing the program button until the motor jiggles twice if you wish to delete all sensors.