

Connexoon Window RTS and Amazon Alexa

easy set up



Works with
IFTTT



Contents

Connect to IFTTT	3
Activate Amazon Alexa voice control Applet	6
Create a new Applet	7

Connect to IFTTT

IFTTT

Prior to IFTTT use...

- Ensure Amazon Alexa has been programmed and is operational.
- Ensure the Connexoon Window RTS device has scenes or ambiances programmed.

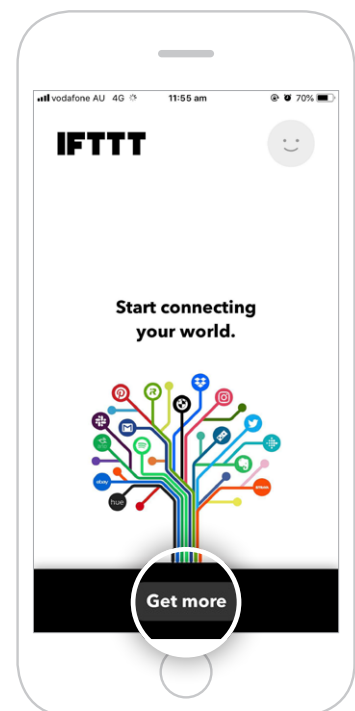
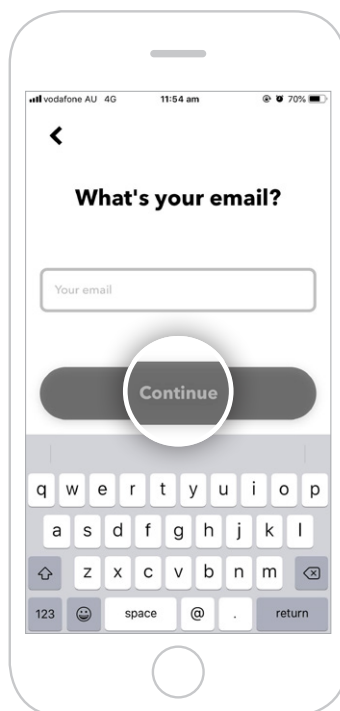
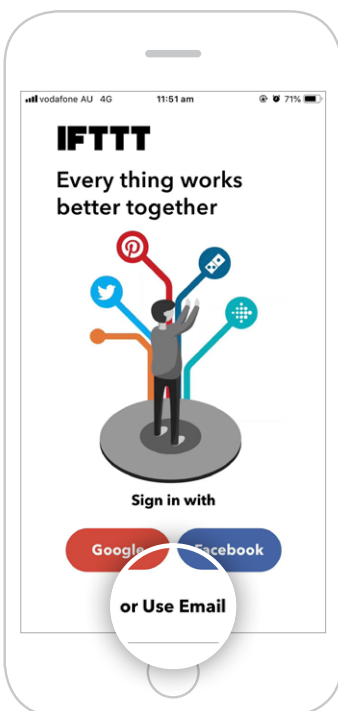
Note: Each Connexoon Window RTS user can have a maximum of 8 scenarios (4 modes and 4 ambiances)



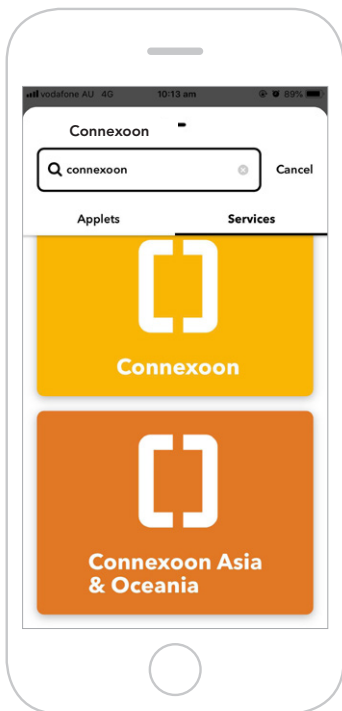
- 1 **Download the IFTTT app** or access the IFTTT website <https://ifttt.com>
- 2 Open the IFTTT app and select **Use Email** to sign in.

- 3 Enter your email address and select **Continue**.

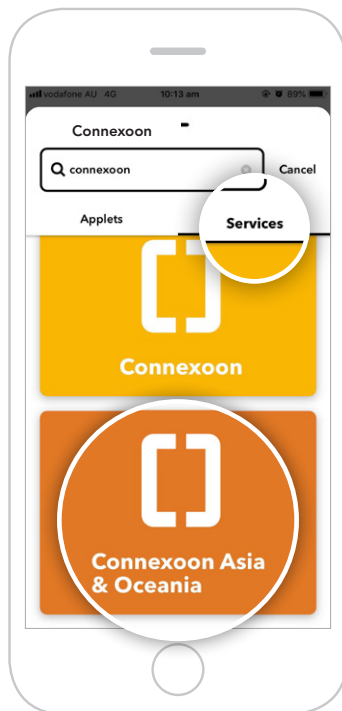
- 4 Select **Get more** to take you to the search engine.



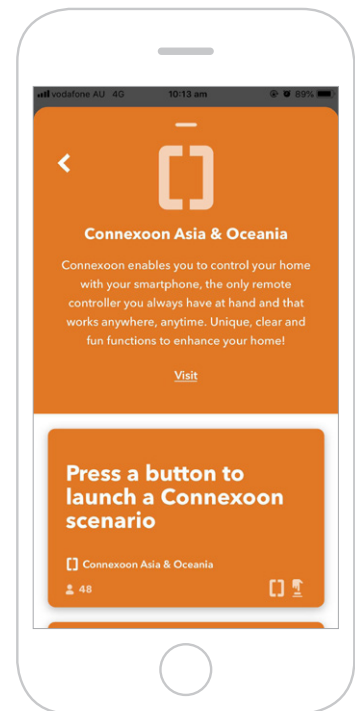
5 Type “**Connexoon**” in the search bar.



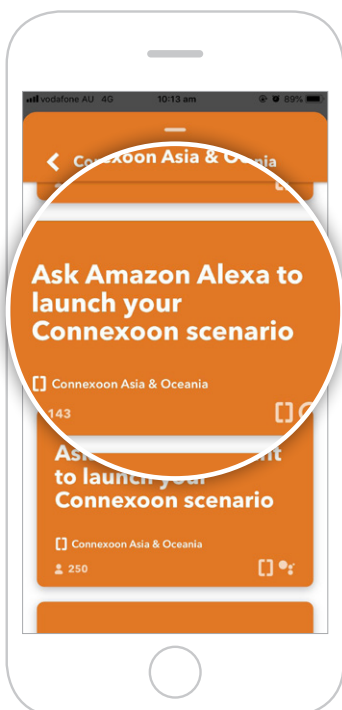
6 Ensure the **Services** tab has been selected in the search results. Select **Connexoon Asia & Oceania**.



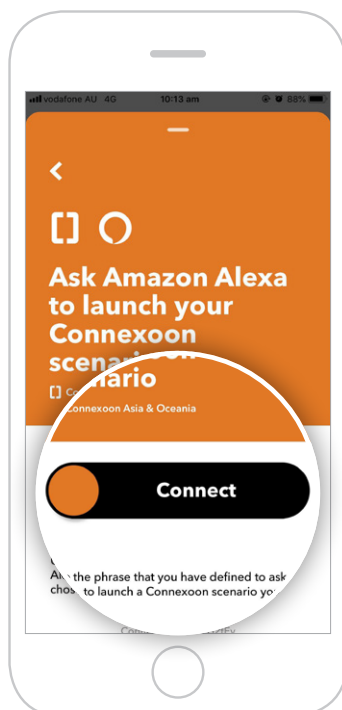
7 You will find Applets proposed by **Connexoon Asia & Oceania**.



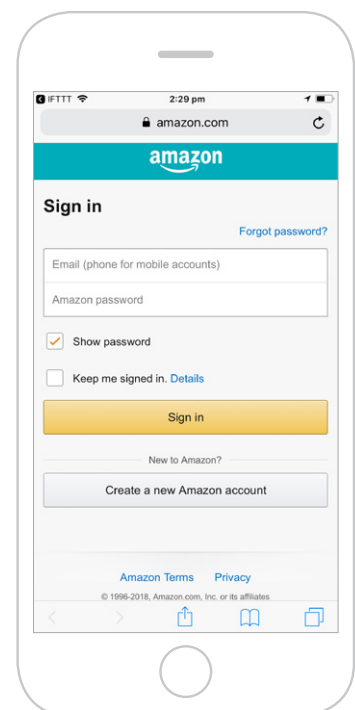
8 Select the Applet for **Amazon Alexa** to connect.



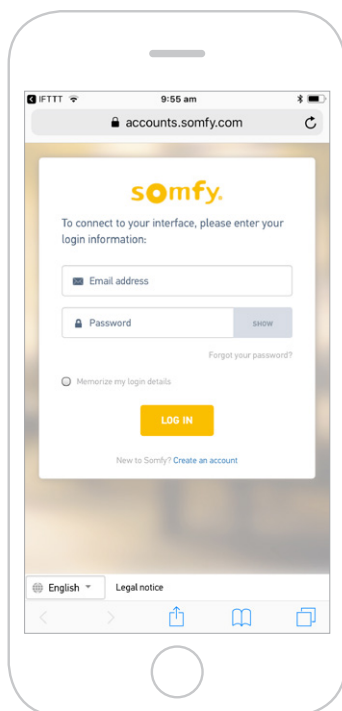
9 Swipe right on the **Connect** button.



10 Enter your Amazon login details and select **Sign-In**.



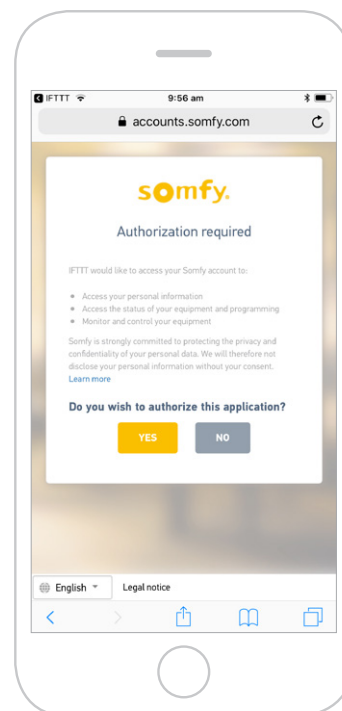
- 11** Enter the email address and password used for your **Connexoon Window RTS login**.



- 12 Authorise** IFTTT compatibility with your Connexoon Window RTS.

“Open in IFTTT?” pop-up appears. Select **Open** to proceed.

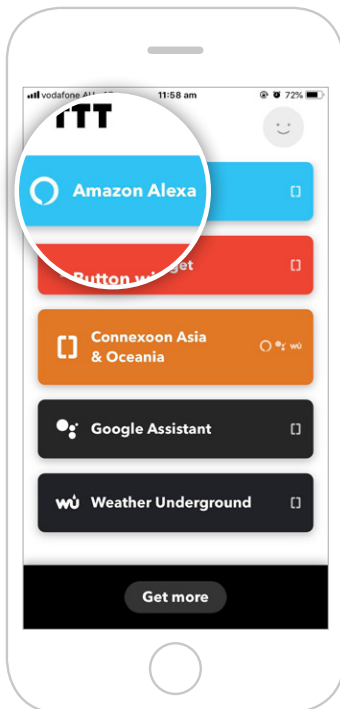
To return to main screen, click the back arrow in the top-left corner and clear the Search field.



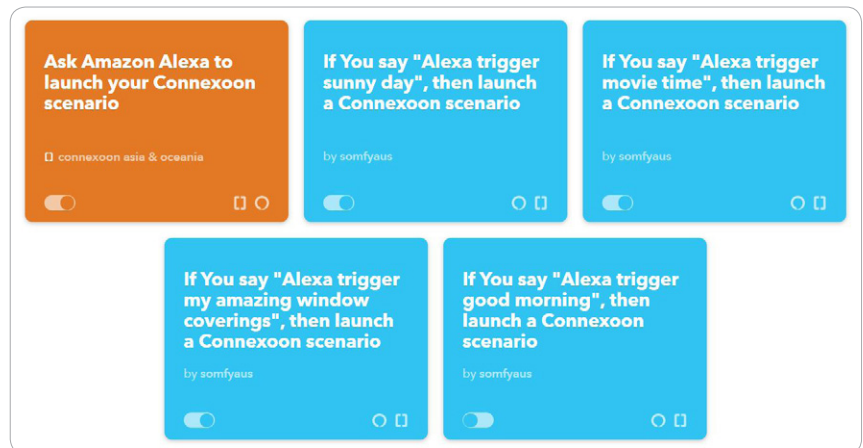
Activate Amazon Alexa voice control Applet

- Follow the next steps to **activate existing Applets** created by Connexoon Asia & Oceania.
- To **create a new Applet**, move to step 17.

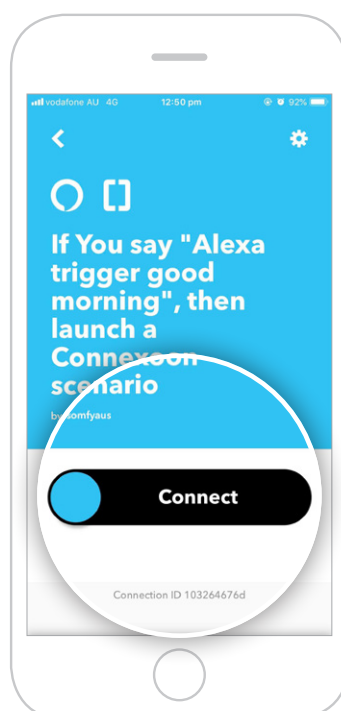
13 Under your home page, select **Amazon Alexa**. This will display all available Applets you've created.



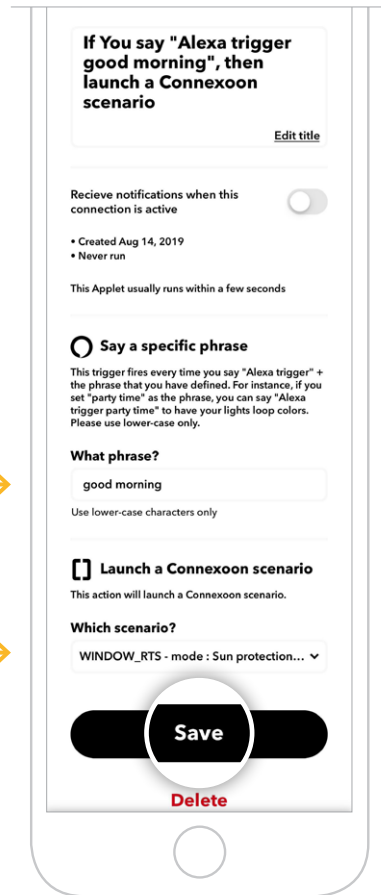
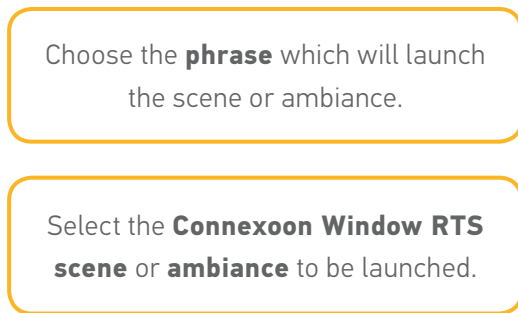
14 Scroll through the list of pre-defined **Applets** to select the one you wish to **activate**.



15 Select the Applet chosen to see the services used. Then swipe right on **Connect**.



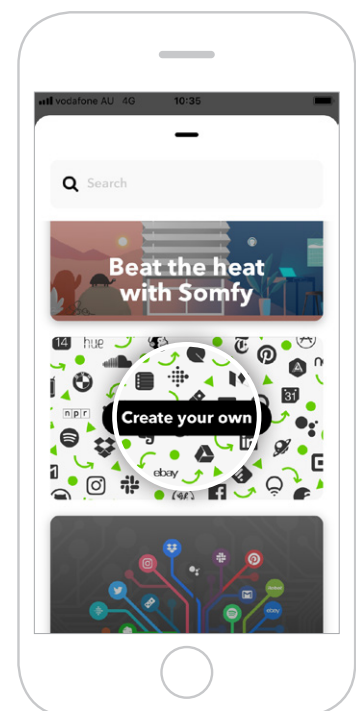
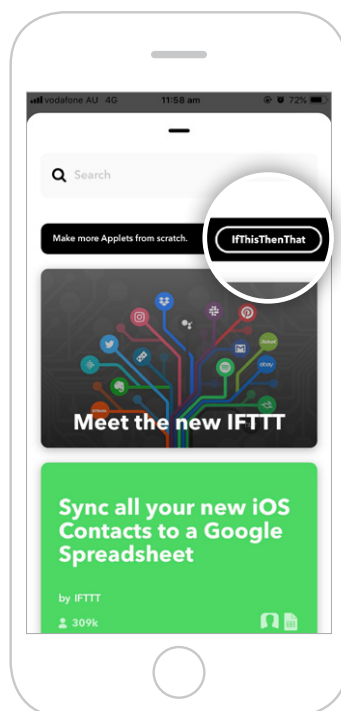
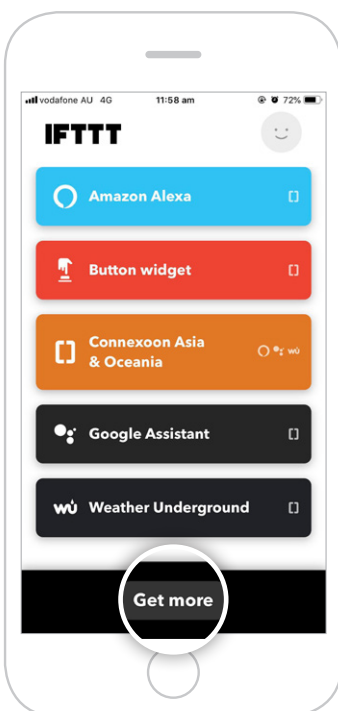
- 16 Enter the details in the Applet and select **Save**.
Your customised Applet has been created.



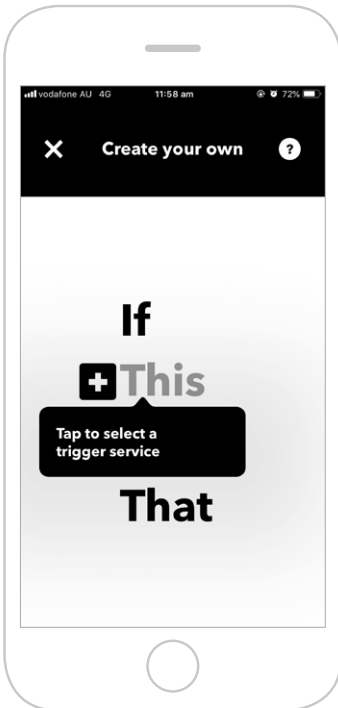
Create a new Applet

- 17 On your home page, press **Get more**. Then select **IfThisThenThat**, situated underneath the search bar.

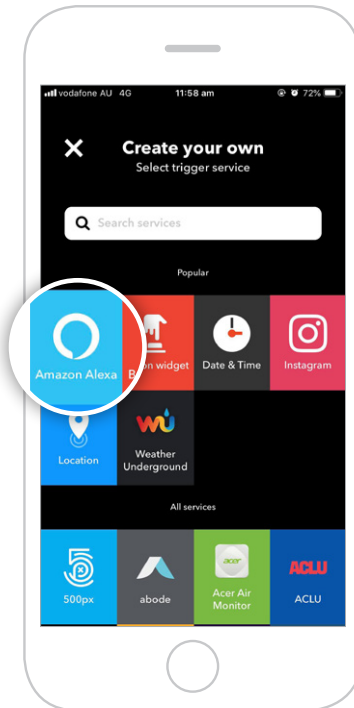
- 18 If you can not find **Make more Applets from scratch**, scroll down and select **Create your own**.



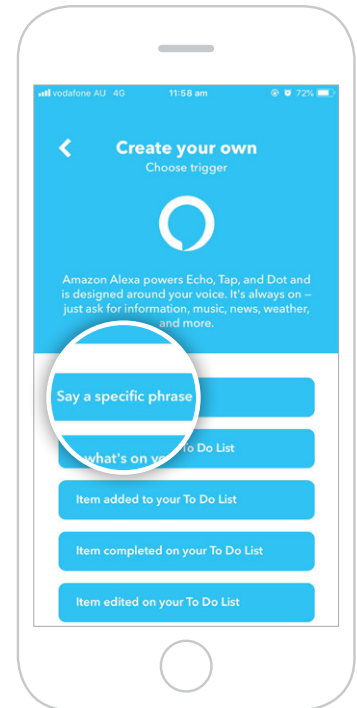
19 Select **+ This**.



20 Search and select **Amazon Alexa**.



21 Select the **style of trigger** to activate the Connexoon Window RTS.



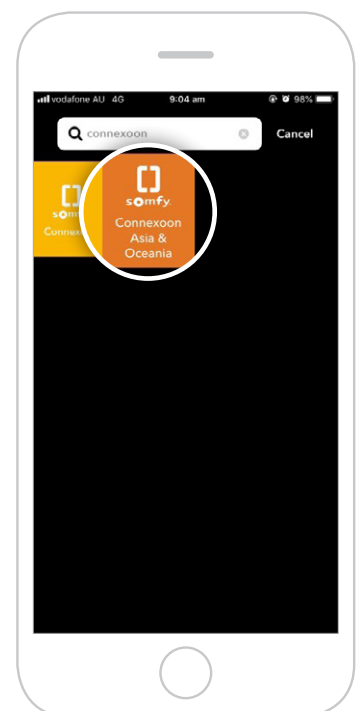
22 Enter the phrase to trigger your Connexoon Window RTS. Select **Create trigger**.



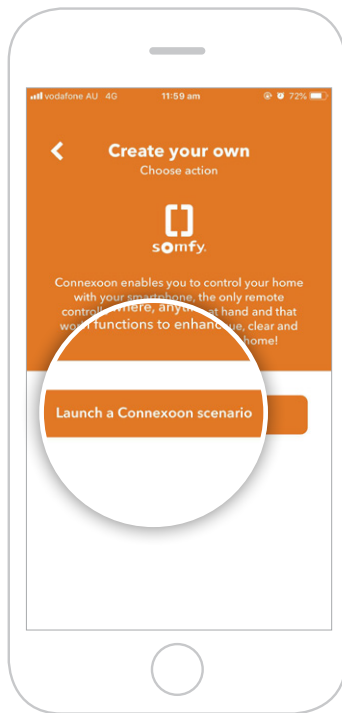
23 Select **+ That**.



24 Search for **"Connexoon"**. Ensure you select **Connexoon Asia & Oceania**.



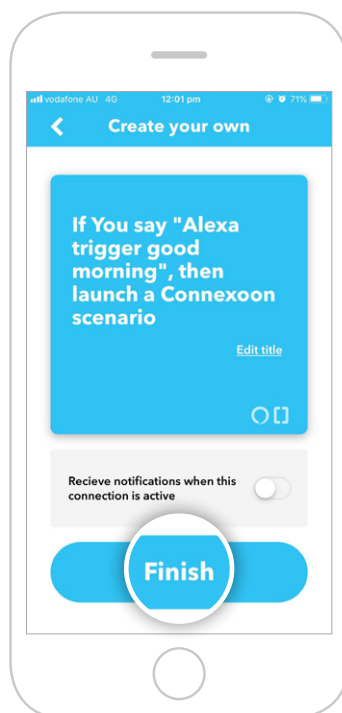
25 Select **Launch a Connexoon scenario**.



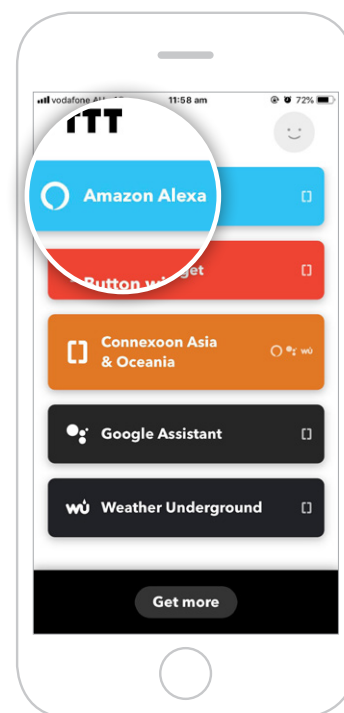
26 Select the Scenario you wish to launch from the drop-down menu. Select **Create action**.



27 The Applet has been created, select **Finish** to save.



28 The Applet can be viewed when selecting **Amazon Alexa** on your home page.



Somfy Pty Limited

Australia

Toll Free 1800 076 639

t: 02 8845 7200

e: somfy.au@somfy.com

New Zealand

Toll Free 0800 276 639

e: somfy.nz@somfy.com

somfy.com.au

somfy.co.nz



Find us on Facebook



Follow us on Instagram



Subscribe to us on YouTube