

# Altus 40 RTS

PRODUCT SPECIFICATIONS



# The precise and simple solution for the interior window covering market

## PRODUCT MAIN FUNCTIONALITIES



**Compatible with Solar protection functions**



**Remote limit setting**



**Round head**  
for reduced dimensions.



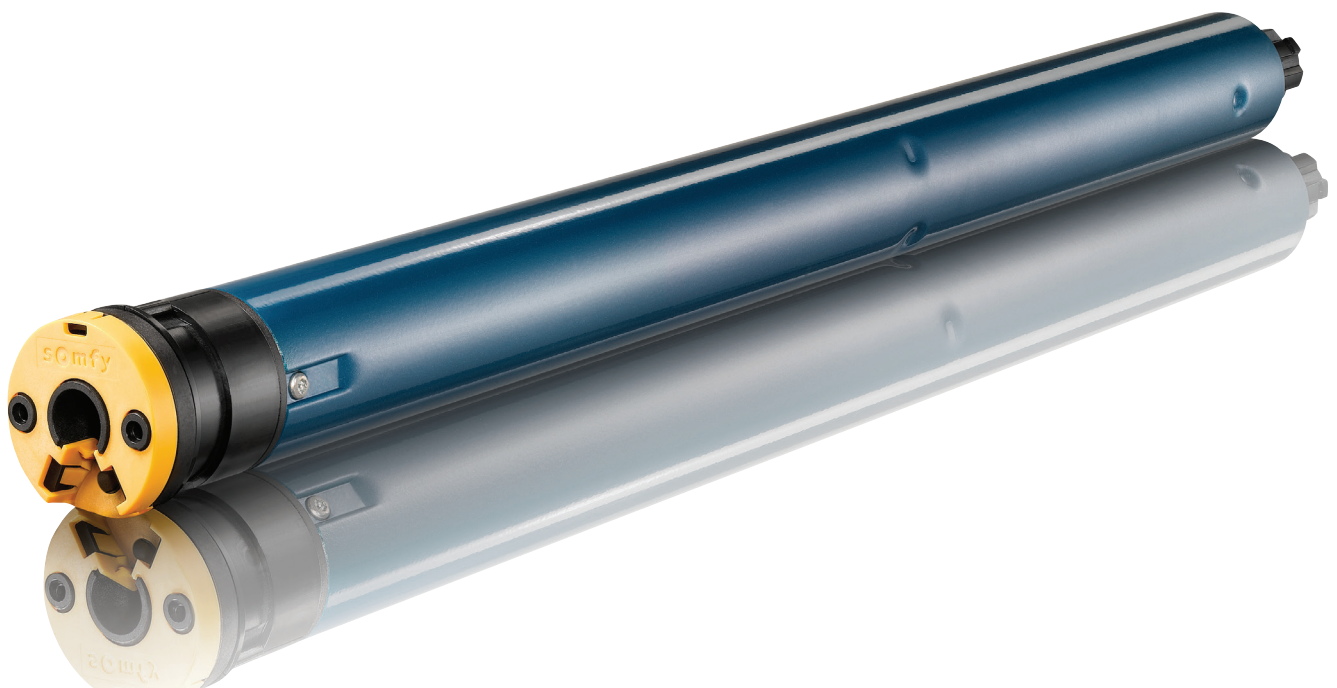
**"my" favourite**  
In one click move the blind to your favourite position.

## Somfy+

Quiet operation and all the benefits of RTS technology.

## RECOMMENDED TO SET WITH:

Universal test lead  
(ref. 9 015 971)



# Altus 40 RTS

## PRODUCT SPECIFICATIONS



### BENEFITS FOR PROFESSIONALS

#### Easy Integration

- Suitable for tubes diameter 40 mm or more (internal diameter)
- Available with inline connector for ease of programming
- Integrated antenna

#### Setting from a distance

- Up and down end limits set by remote control

### BENEFITS FOR END USERS

#### Simple, effortless control

- Quiet operation
- Move your blinds effortlessly and remotely thanks to the radio control
- Move your blinds to your favourite "my" position in one click

#### Access to RTS product range for more benefits

- Solar protection functions compatibility

### COMPATIBLE END-PRODUCTS



Roller blinds

### TECHNICAL DATA

Thermal Time	4 minutes
Supply	AC
Index protection rating	IP 44 (indoor use only)
Limit switch unit	Electronic
Limit switch capacity	Unlimited
Temperature working range	-10°C to +40°C
Electric insulation	Class II
Capacity of memory	12 different transmitters plus 3 wireless sensors
Coding	Rolling code with 16 million possibilities

### PERFORMANCES

	3/30	13/10
Nominal Voltage	230V / 50Hz	
Torque (Nm)	3	13
Speed (rm)	30	10
Rated Current (A)	0.42	0.52
End-limit unit versions available	RTS	RTS
Radio Frequency	433, 42 MHz	
Item Number	1020124	1024171
Item Number with inline connector	1020172	1024234

### DIMENSIONS

L (mm)	497	497
--------	-----	-----

230 V

