

# Altus 28 WF Li-ion RTS

## Adjusting End Limits

**Note:** Before adjusting end limit, the motor must be completely programmed with a remote

**Note:** Skip step 1 to set Bottom Limit

### Adjust Top Limit



Briefly press the Up button and the motor will travel to the current upper limit.



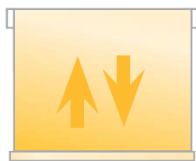
Move to step 3.

### Adjust Bottom Limit



Briefly press the Down button, and the motor will travel to the current lower limit.

### Setting the New Limit

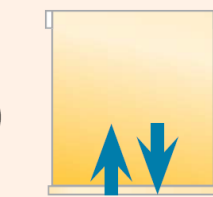


Press and hold Up and Down buttons until the motor jiggles.



Adjust to the correct position using either the Up or Down button.

Press for 2 secs

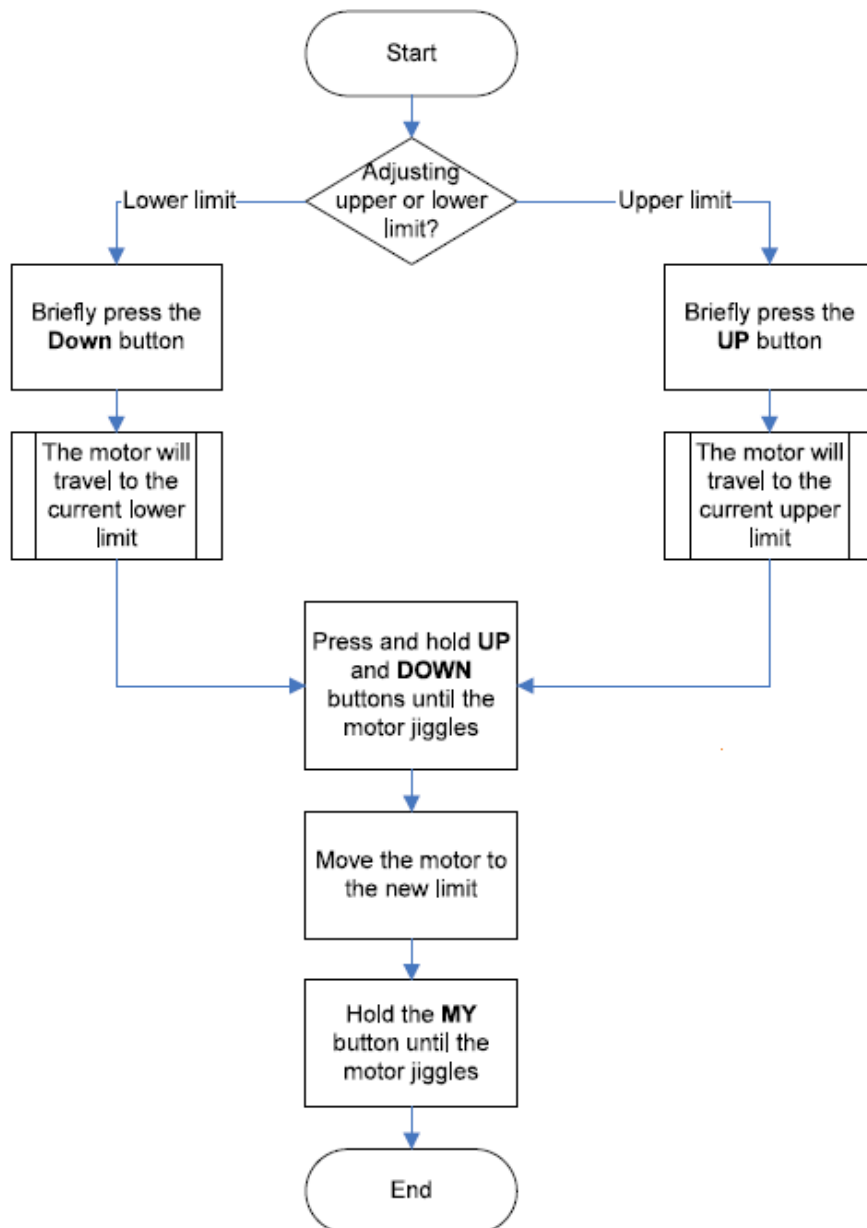


New limit position set

Hold the **my** button until the motor jiggles.



## Flowchart for Adjusting End Limits



Before adjusting end limit, the motor must be completely programmed with a remote.

In order to adjust end limits, current end limits must be accessible.