

Sonesse 30 WF Li-ion RTS

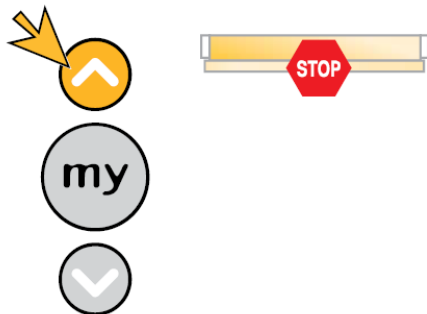
Adjusting End Limits

Note: Before adjusting end limit, the motor must be completely programmed with a remote

Note: Skip step 1 to set Bottom Limit

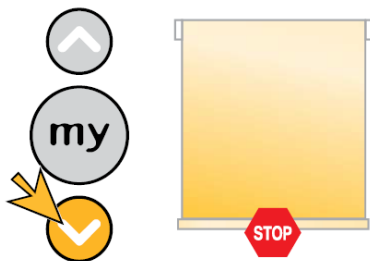
1. ADJUST TOP LIMIT

Briefly press the UP button and send the motor to the top limit. Continue to Step 3



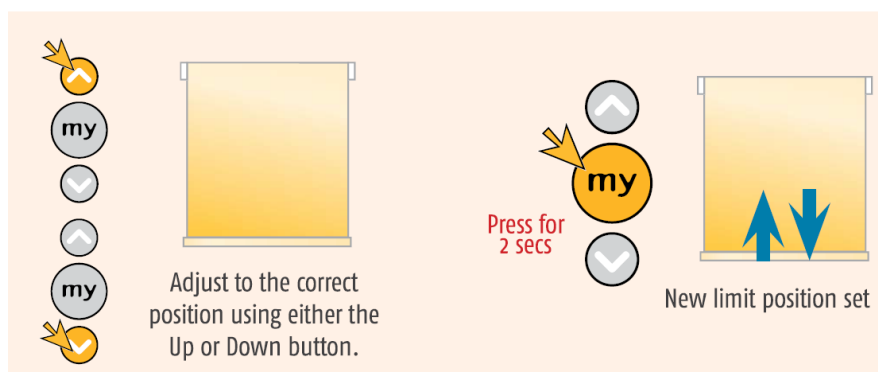
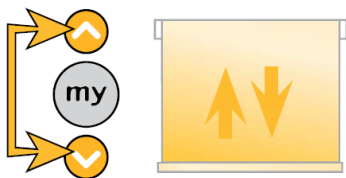
2. ADJUST BOTTOM LIMIT

Briefly press the DOWN button and send the motor to the bottom limit

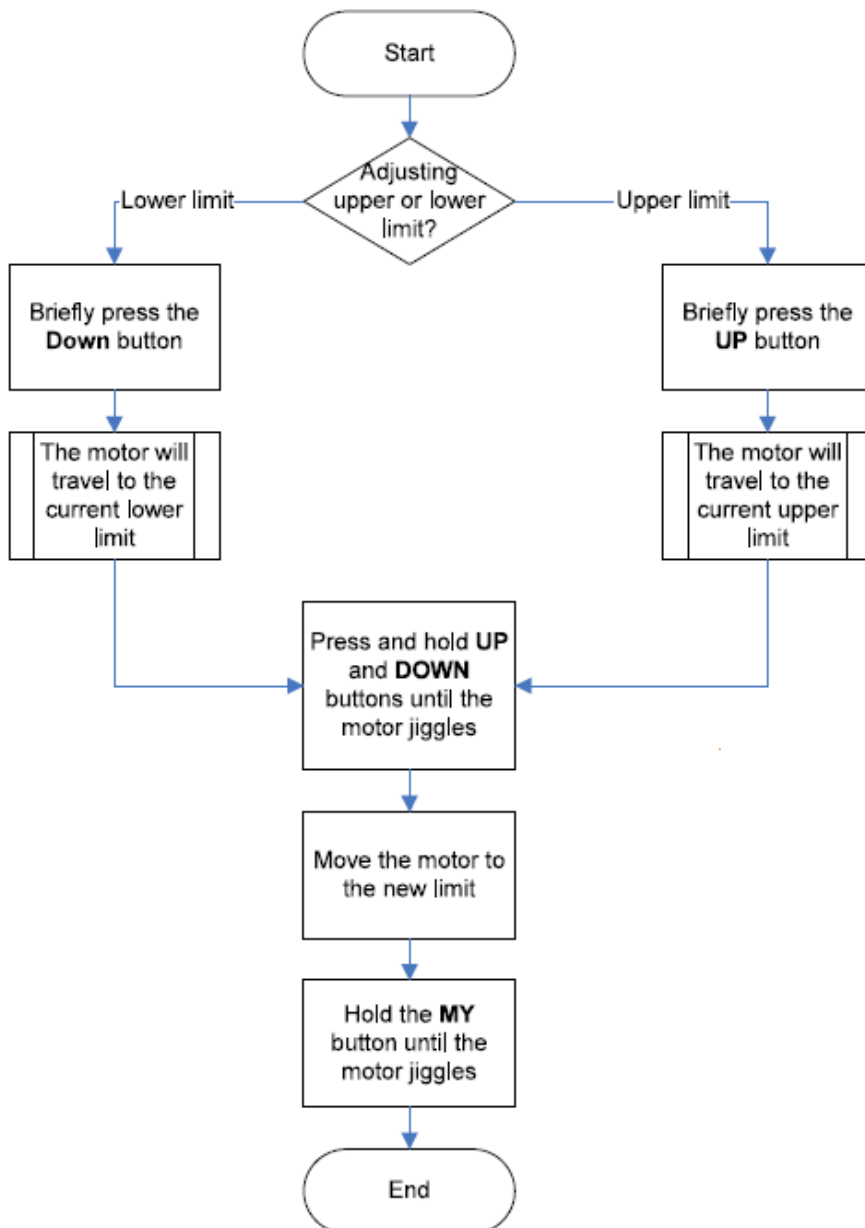


3. SETTING THE NEW LIMIT

1. Press & hold the UP & DOWN buttons until the motor jogs
2. Adjust to the correct position using either the UP or DOWN button
3. Hold the MY button until the motor jogs
4. New limit is now set



FLOWCHART FOR ADJUSTING END LIMITS



Before adjusting end limit, the motor must be completely programmed with a remote.

In order to adjust end limits, current end limits must be accessible.